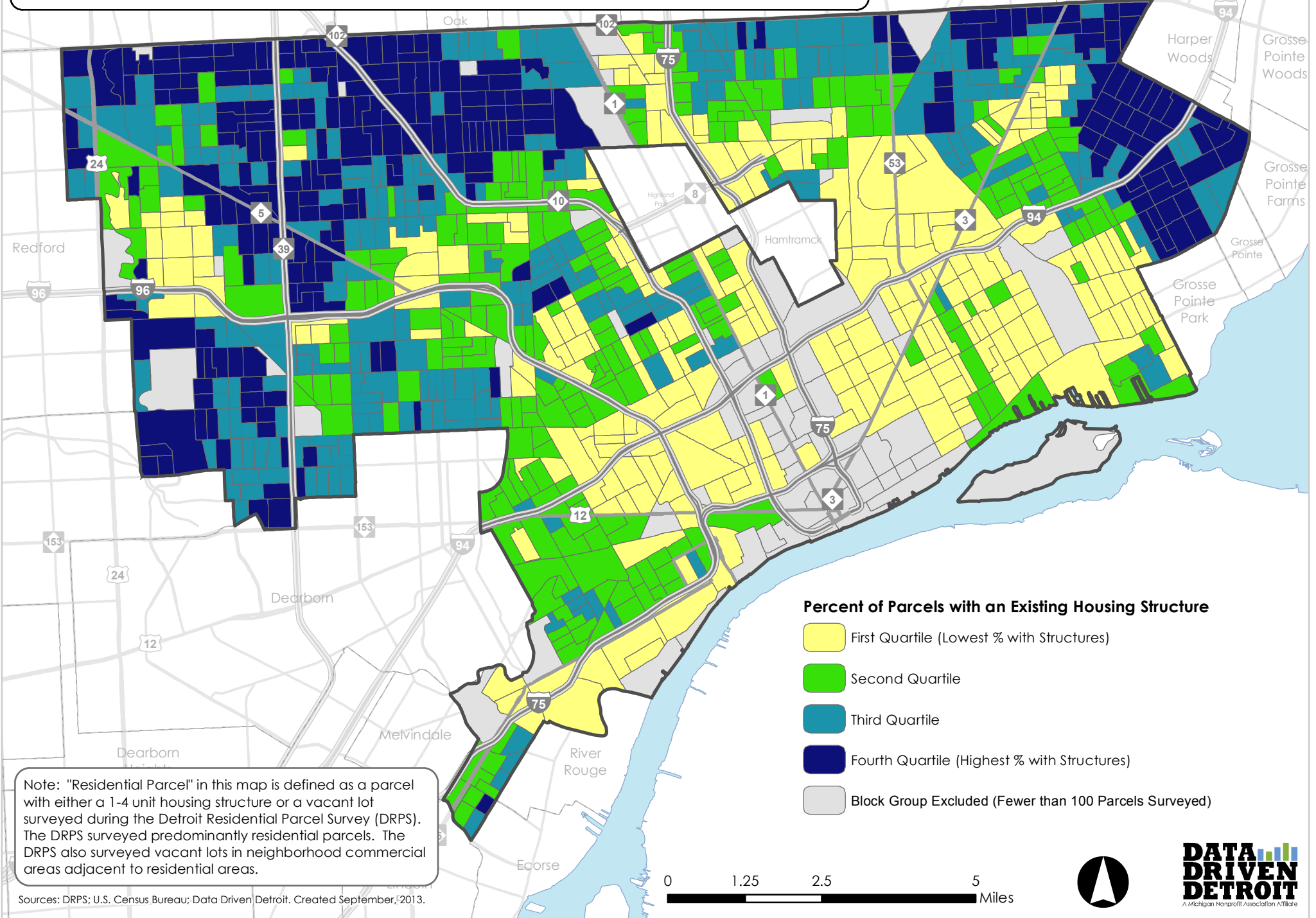


Percentage of Residential Parcels with an Existing Housing Structure, by 2000 Census Block Group, Detroit, MI



Percent of Parcels with an Existing Housing Structure

- First Quartile (Lowest % with Structures)
- Second Quartile
- Third Quartile
- Fourth Quartile (Highest % with Structures)
- Block Group Excluded (Fewer than 100 Parcels Surveyed)

Note: "Residential Parcel" in this map is defined as a parcel with either a 1-4 unit housing structure or a vacant lot surveyed during the Detroit Residential Parcel Survey (DRPS). The DRPS surveyed predominantly residential parcels. The DRPS also surveyed vacant lots in neighborhood commercial areas adjacent to residential areas.

Sources: DRPS; U.S. Census Bureau; Data Driven Detroit. Created September, 2013.

