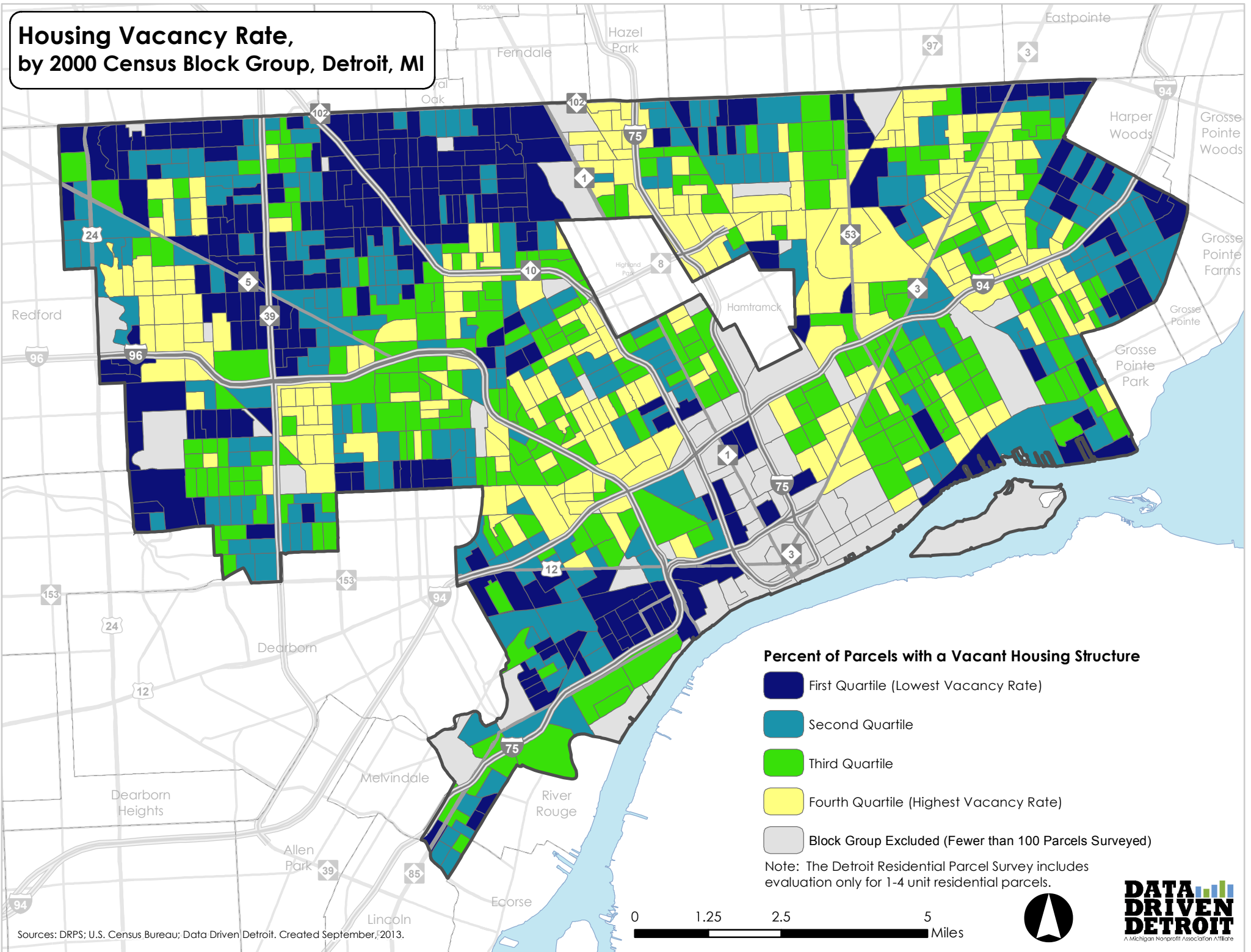


Housing Vacancy Rate, by 2000 Census Block Group, Detroit, MI



Percent of Parcels with a Vacant Housing Structure

- First Quartile (Lowest Vacancy Rate)
- Second Quartile
- Third Quartile
- Fourth Quartile (Highest Vacancy Rate)
- Block Group Excluded (Fewer than 100 Parcels Surveyed)

Note: The Detroit Residential Parcel Survey includes evaluation only for 1-4 unit residential parcels.

Sources: DRPS; U.S. Census Bureau; Data Driven Detroit. Created September, 2013.

