

**District 1**  
 Hispanic 0.9%  
 White 5.3%  
 Black 91.4%  
 Asian 0.2%

**District 2**  
 Hispanic 0.9%  
 White 2.5%  
 Black 94.3%  
 Asian 0.3%

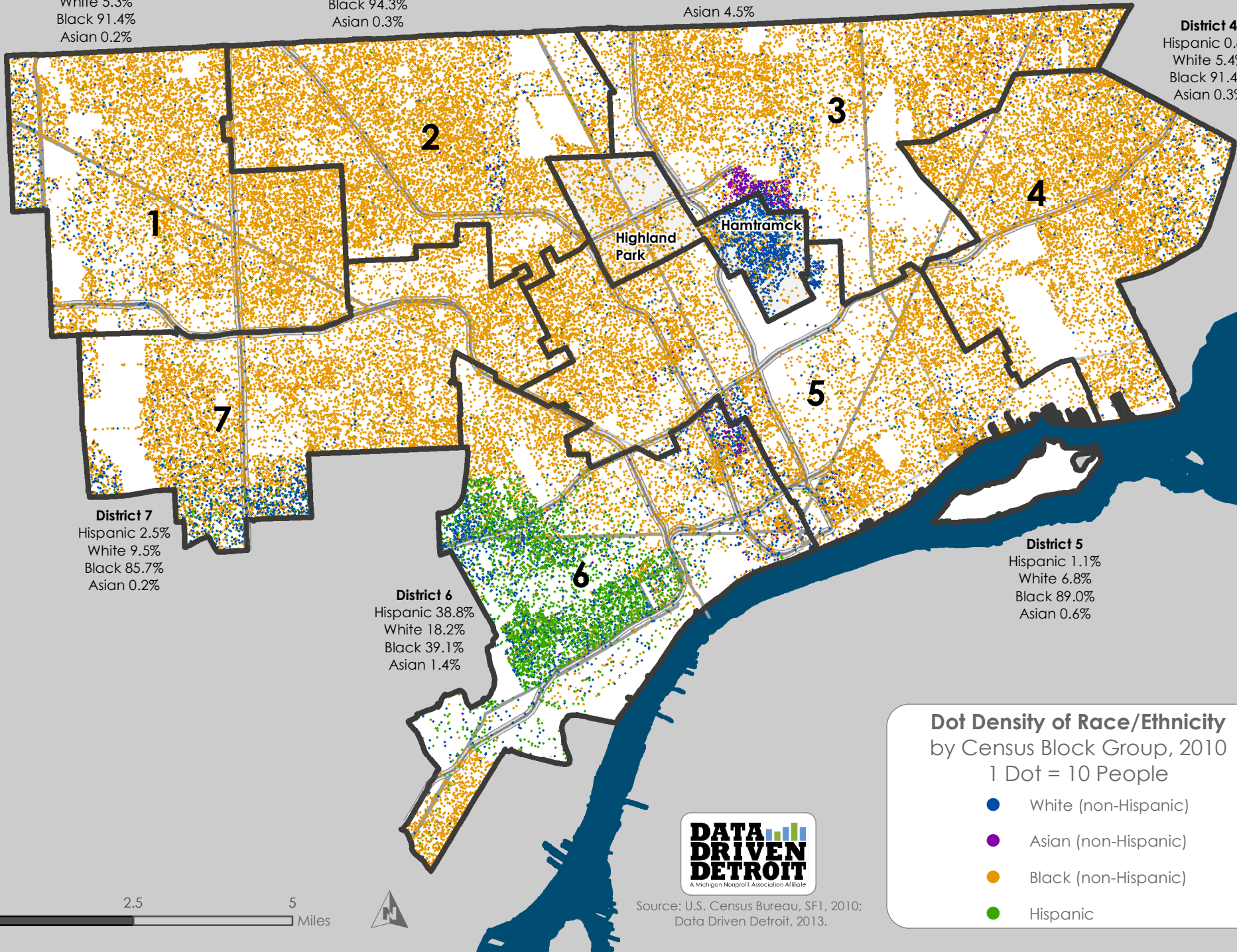
**District 3**  
 Hispanic 1.0%  
 White 6.4%  
 Black 86.1%  
 Asian 4.5%

**District 4**  
 Hispanic 0.8%  
 White 5.4%  
 Black 91.4%  
 Asian 0.3%

**District 7**  
 Hispanic 2.5%  
 White 9.5%  
 Black 85.7%  
 Asian 0.2%

**District 6**  
 Hispanic 38.8%  
 White 18.2%  
 Black 39.1%  
 Asian 1.4%

**District 5**  
 Hispanic 1.1%  
 White 6.8%  
 Black 89.0%  
 Asian 0.6%



**Dot Density of Race/Ethnicity**  
 by Census Block Group, 2010  
 1 Dot = 10 People

- White (non-Hispanic)
- Asian (non-Hispanic)
- Black (non-Hispanic)
- Hispanic



Source: U.S. Census Bureau, SF1, 2010;  
 Data Driven Detroit, 2013.

