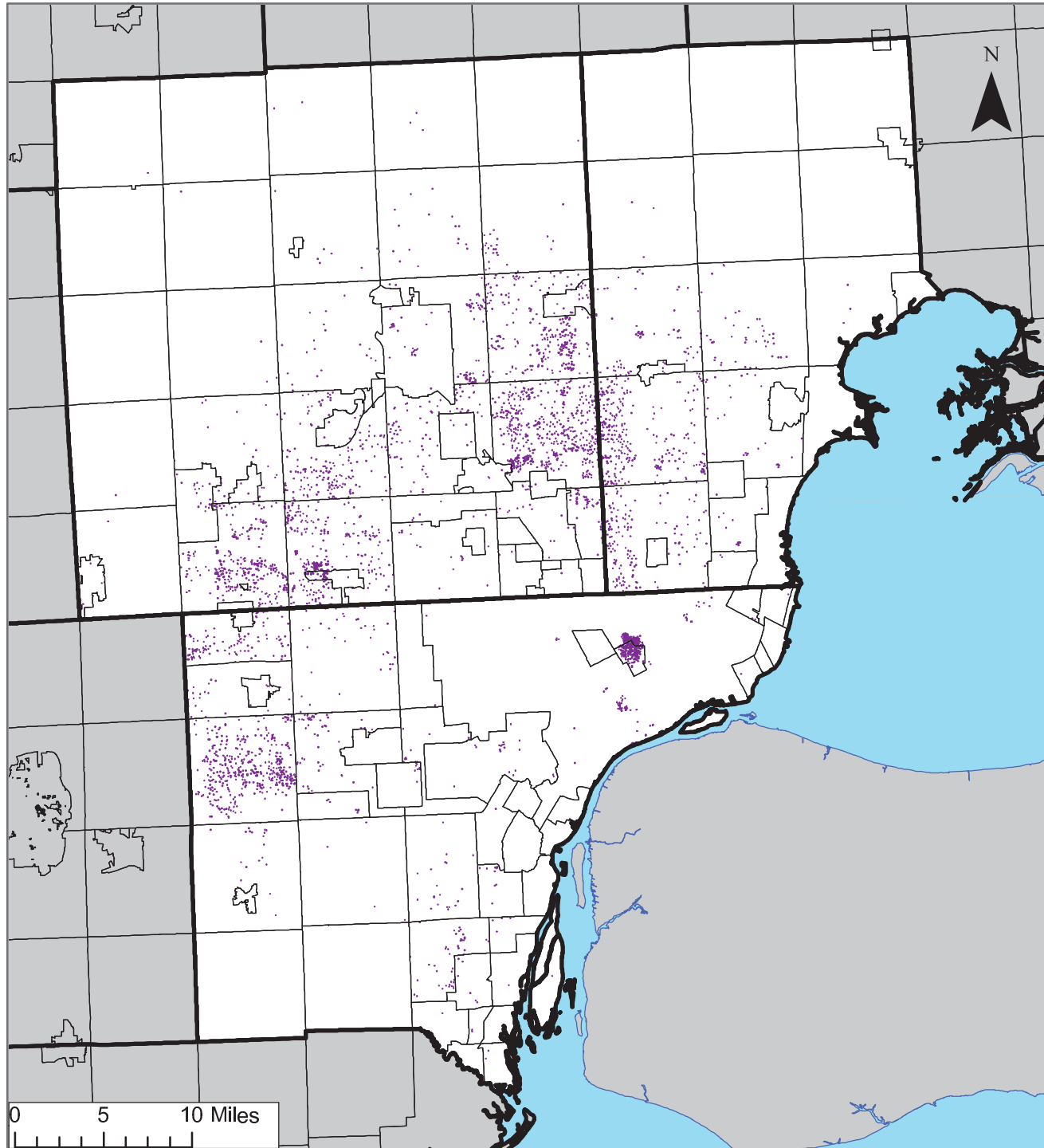


# Dot Density Map Of Racial Distribution in Macomb, Oakland and Wayne Counties



1 Dot = 25 People

- Hispanic
- Black (non-Hispanic)
- Asian (non-Hispanic)
- White (non-Hispanic)

- ▭ Municipal Boundaries
- ▭ Water
- ▭ Neighboring Areas



**DATA**  
**DRIVEN**  
**DETROIT**