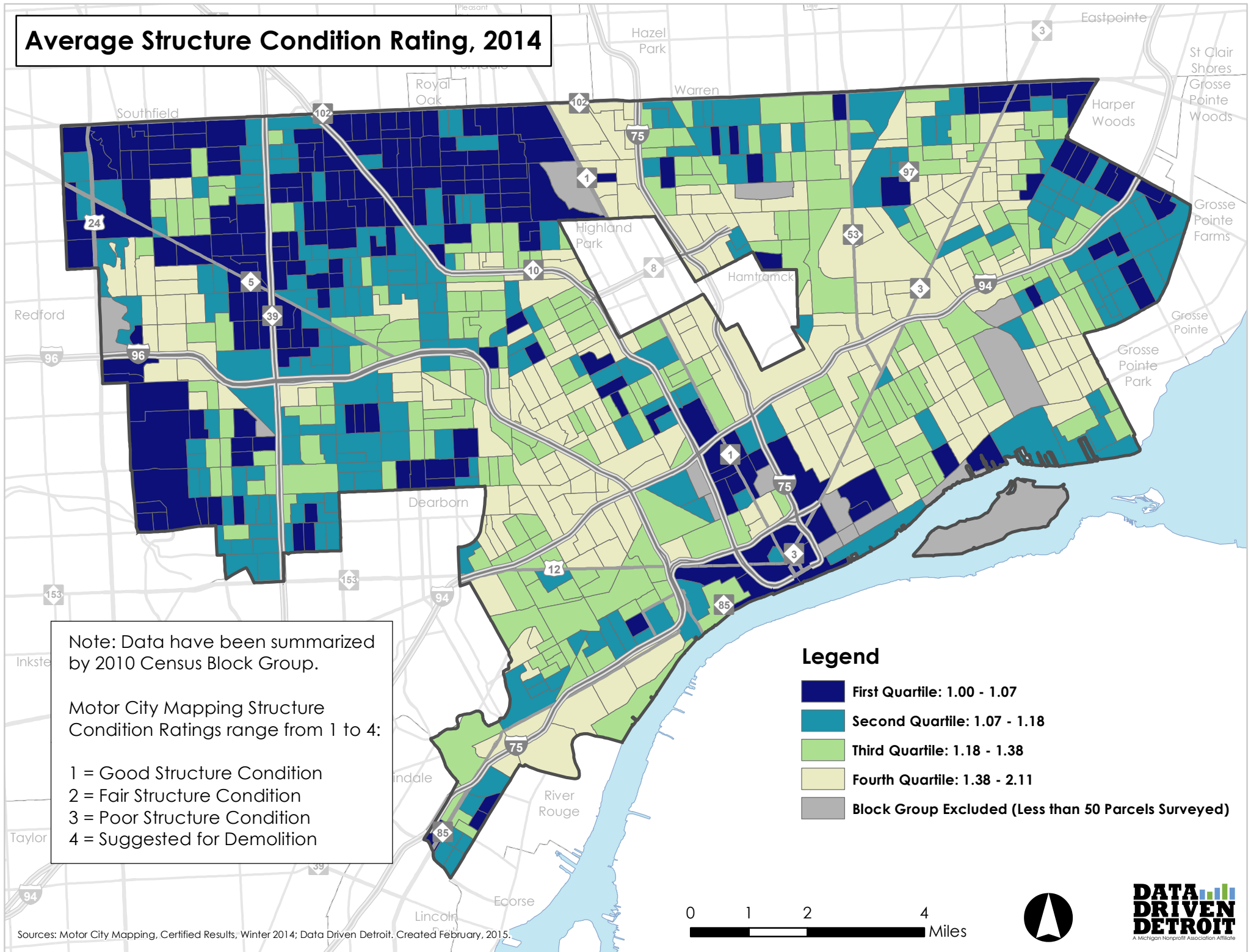


Average Structure Condition Rating, 2014



Note: Data have been summarized by 2010 Census Block Group.

Motor City Mapping Structure Condition Ratings range from 1 to 4:

- 1 = Good Structure Condition
- 2 = Fair Structure Condition
- 3 = Poor Structure Condition
- 4 = Suggested for Demolition

Legend

- First Quartile: 1.00 - 1.07
- Second Quartile: 1.07 - 1.18
- Third Quartile: 1.18 - 1.38
- Fourth Quartile: 1.38 - 2.11
- Block Group Excluded (Less than 50 Parcels Surveyed)

Sources: Motor City Mapping, Certified Results, Winter 2014; Data Driven Detroit. Created February, 2015.

