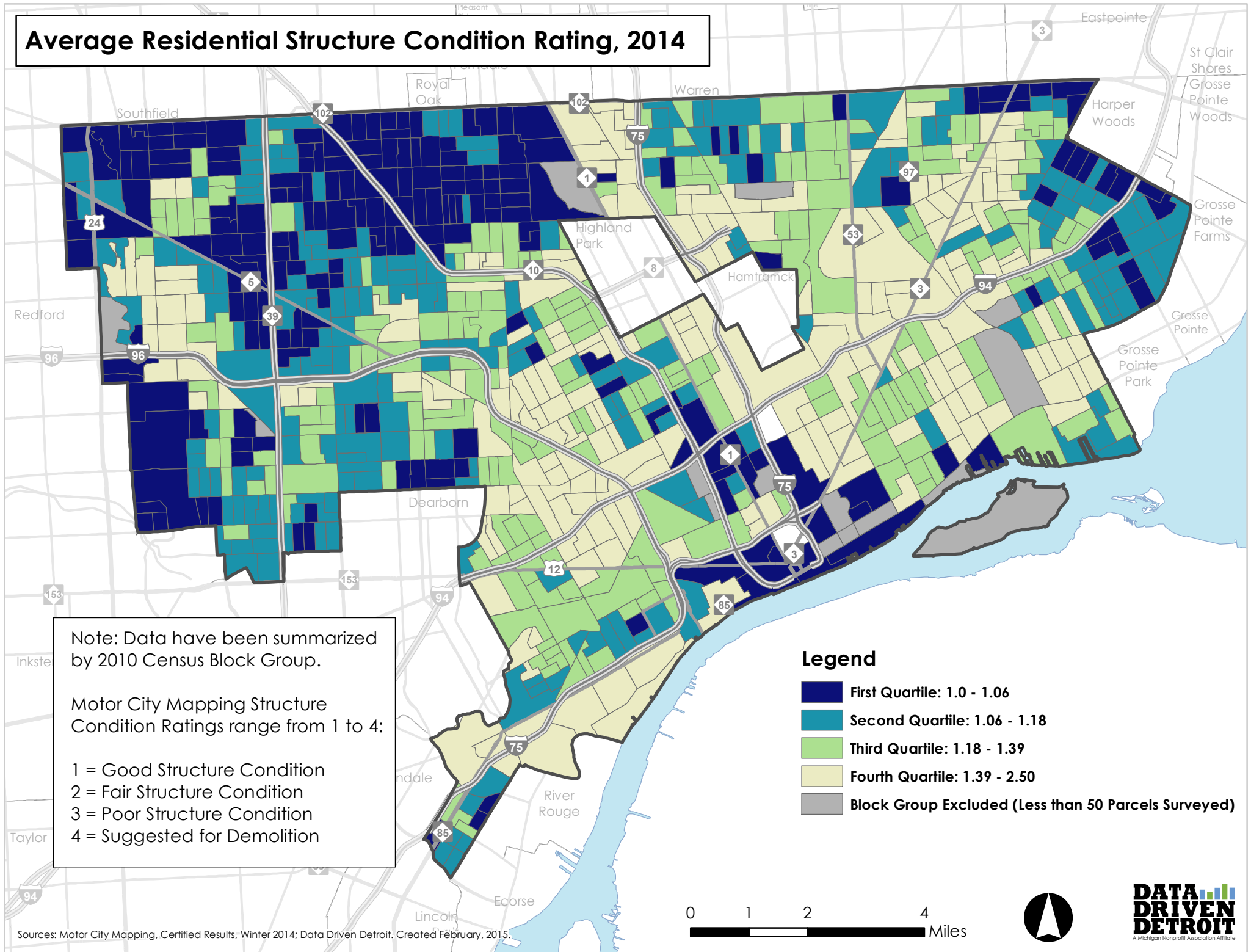


Average Residential Structure Condition Rating, 2014



Note: Data have been summarized by 2010 Census Block Group.

Motor City Mapping Structure Condition Ratings range from 1 to 4:

1 = Good Structure Condition
 2 = Fair Structure Condition
 3 = Poor Structure Condition
 4 = Suggested for Demolition

Legend

- First Quartile: 1.0 - 1.06
- Second Quartile: 1.06 - 1.18
- Third Quartile: 1.18 - 1.39
- Fourth Quartile: 1.39 - 2.50
- Block Group Excluded (Less than 50 Parcels Surveyed)

Sources: Motor City Mapping, Certified Results, Winter 2014; Data Driven Detroit. Created February, 2015.

