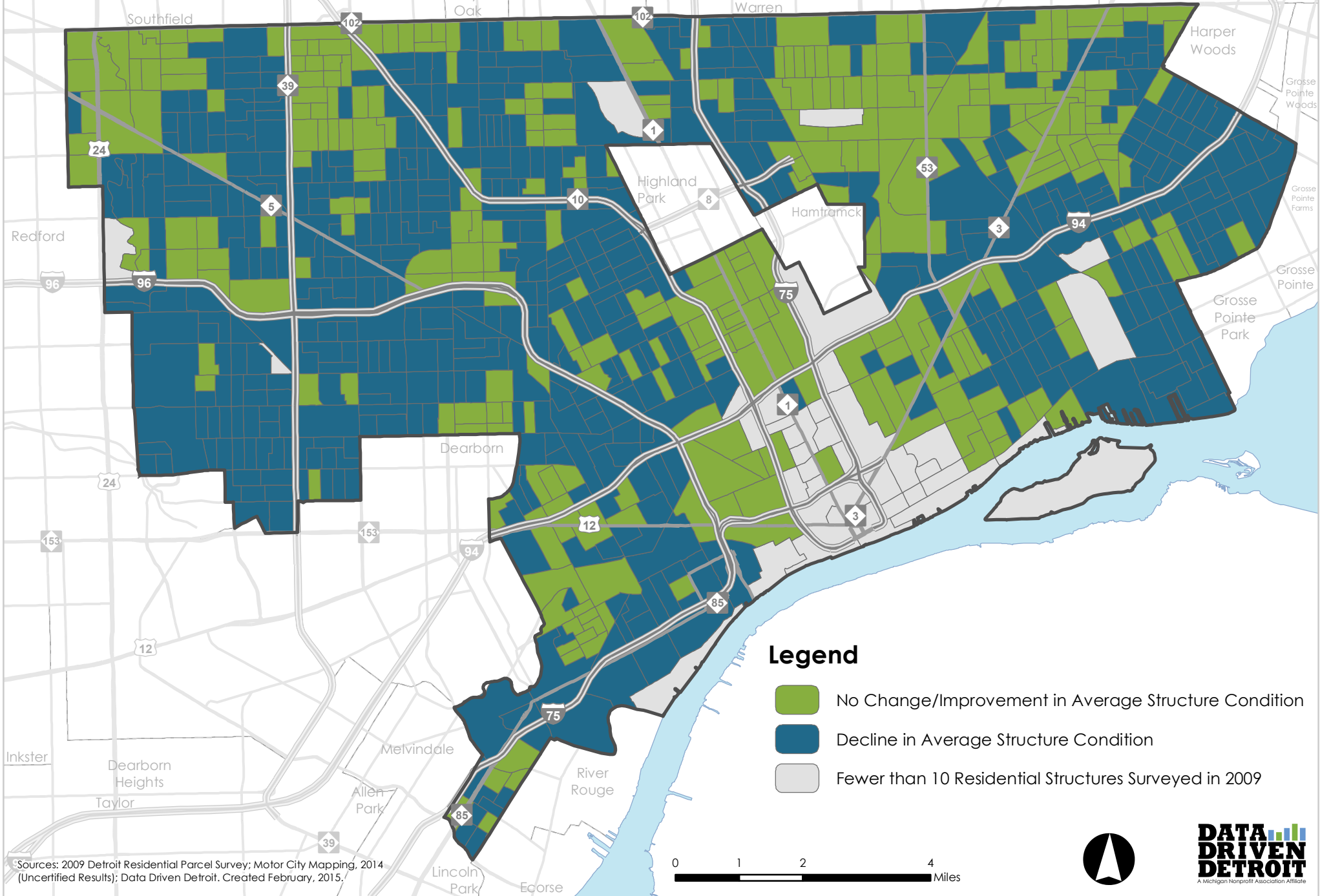





Change in Average Residential Structure Condition, 2009 - 2014



Legend

-  No Change/Improvement in Average Structure Condition
-  Decline in Average Structure Condition
-  Fewer than 10 Residential Structures Surveyed in 2009

Sources: 2009 Detroit Residential Parcel Survey; Motor City Mapping, 2014 (Uncertified Results); Data Driven Detroit. Created February, 2015.

