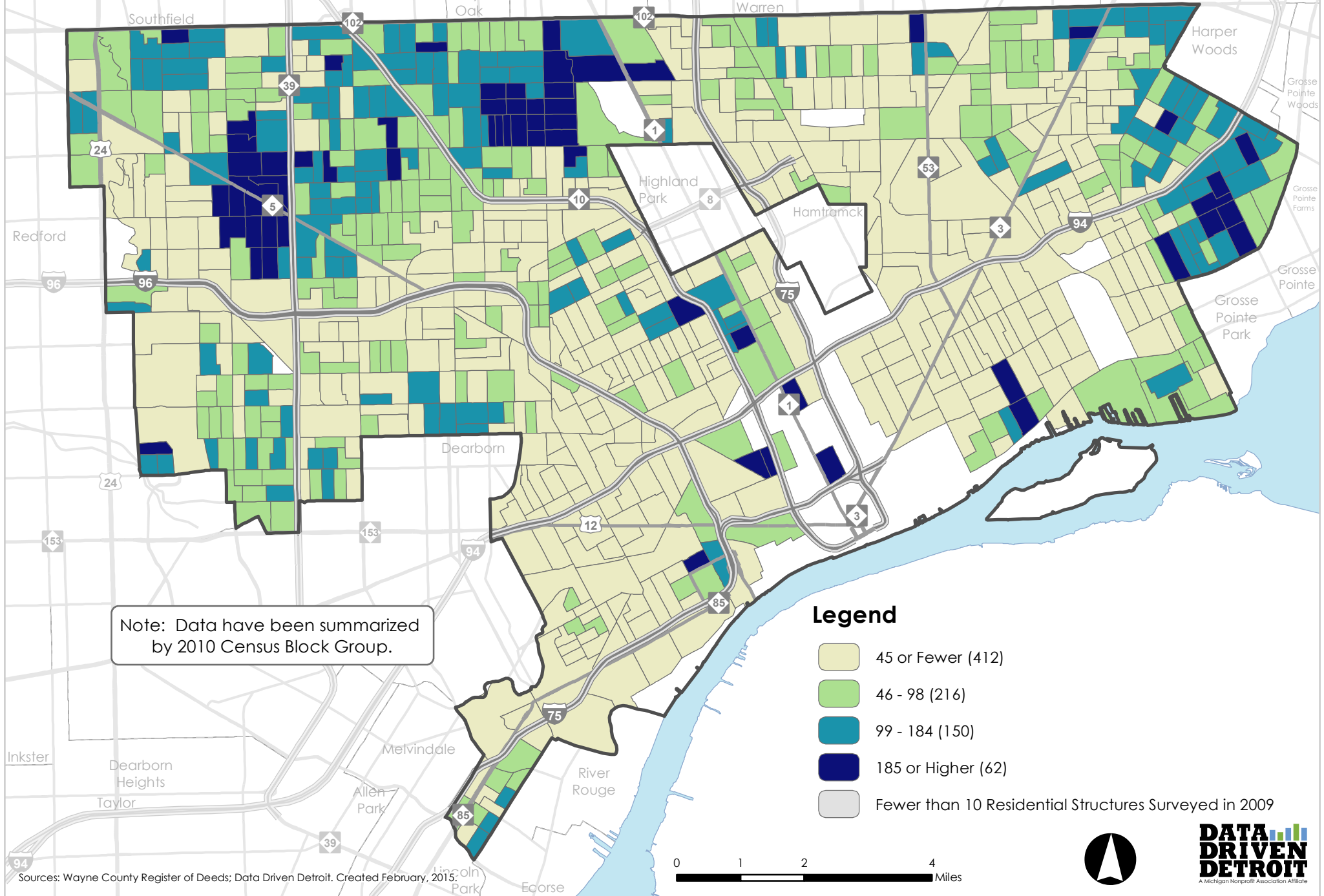


Mortgage Deeds per Square Mile, 2012-13 (2008-09 Ranges)



Note: Data have been summarized by 2010 Census Block Group.

Legend

- 45 or Fewer (412)
- 46 - 98 (216)
- 99 - 184 (150)
- 185 or Higher (62)
- Fewer than 10 Residential Structures Surveyed in 2009

Sources: Wayne County Register of Deeds; Data Driven Detroit. Created February, 2015.

