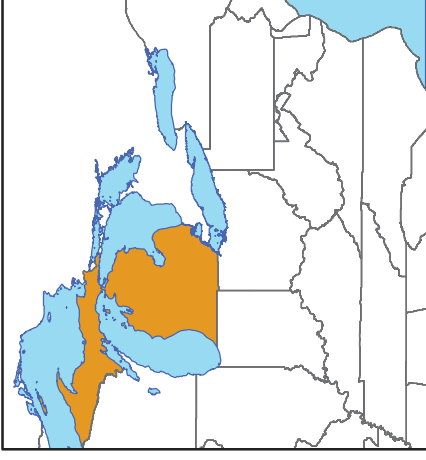
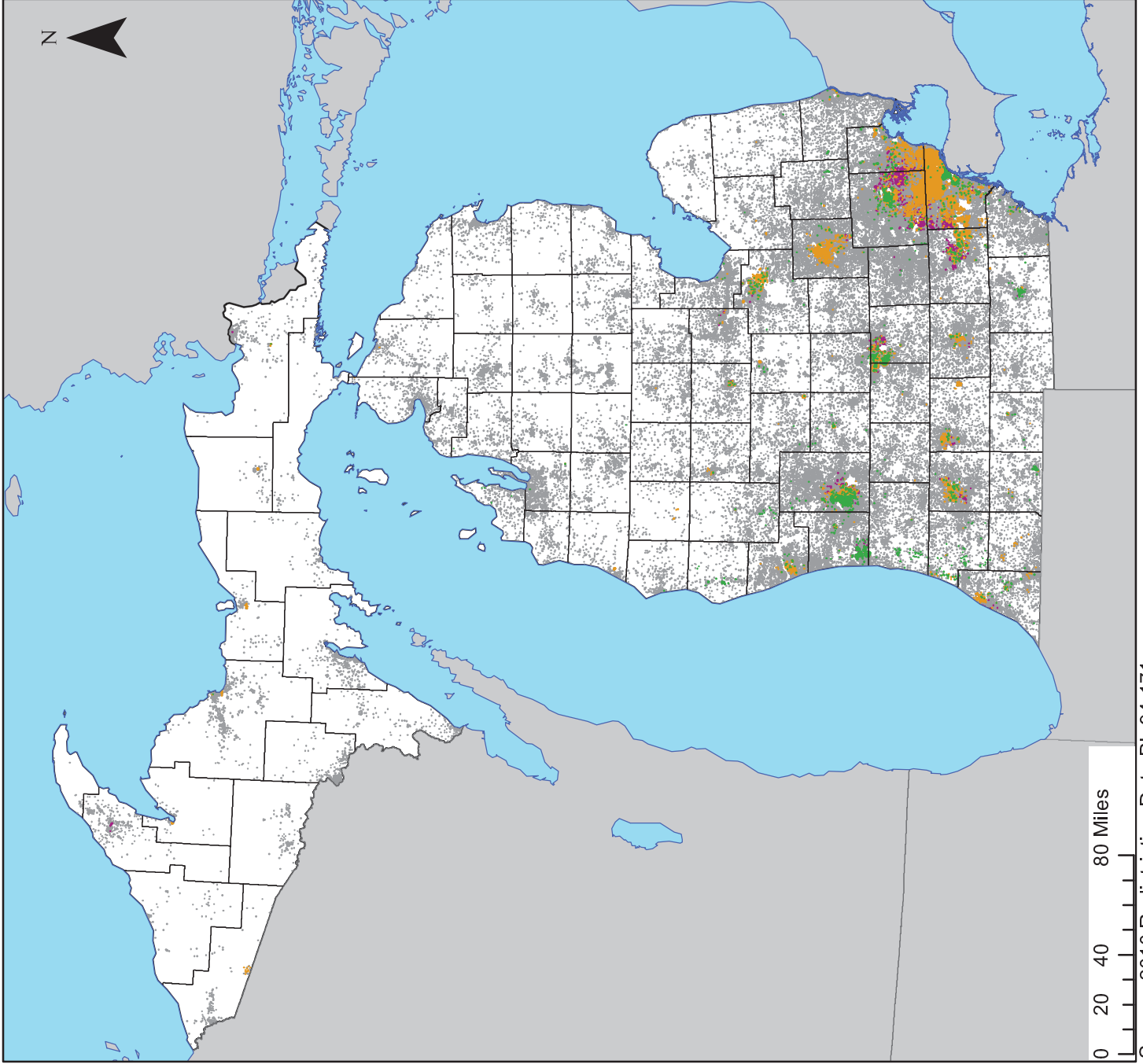


Dot Density Map Of Racial Distribution In the State of Michigan

- 1 Dot = 50 People
- Hispanic
- Black (non-Hispanic)
- Asian (non-Hispanic)
- White (non-Hispanic)
- County Lines
- Water
- Neighboring Areas



DATA
DRIVEN
DETROIT



Source: 2010 Redistricting Data PL 94-171