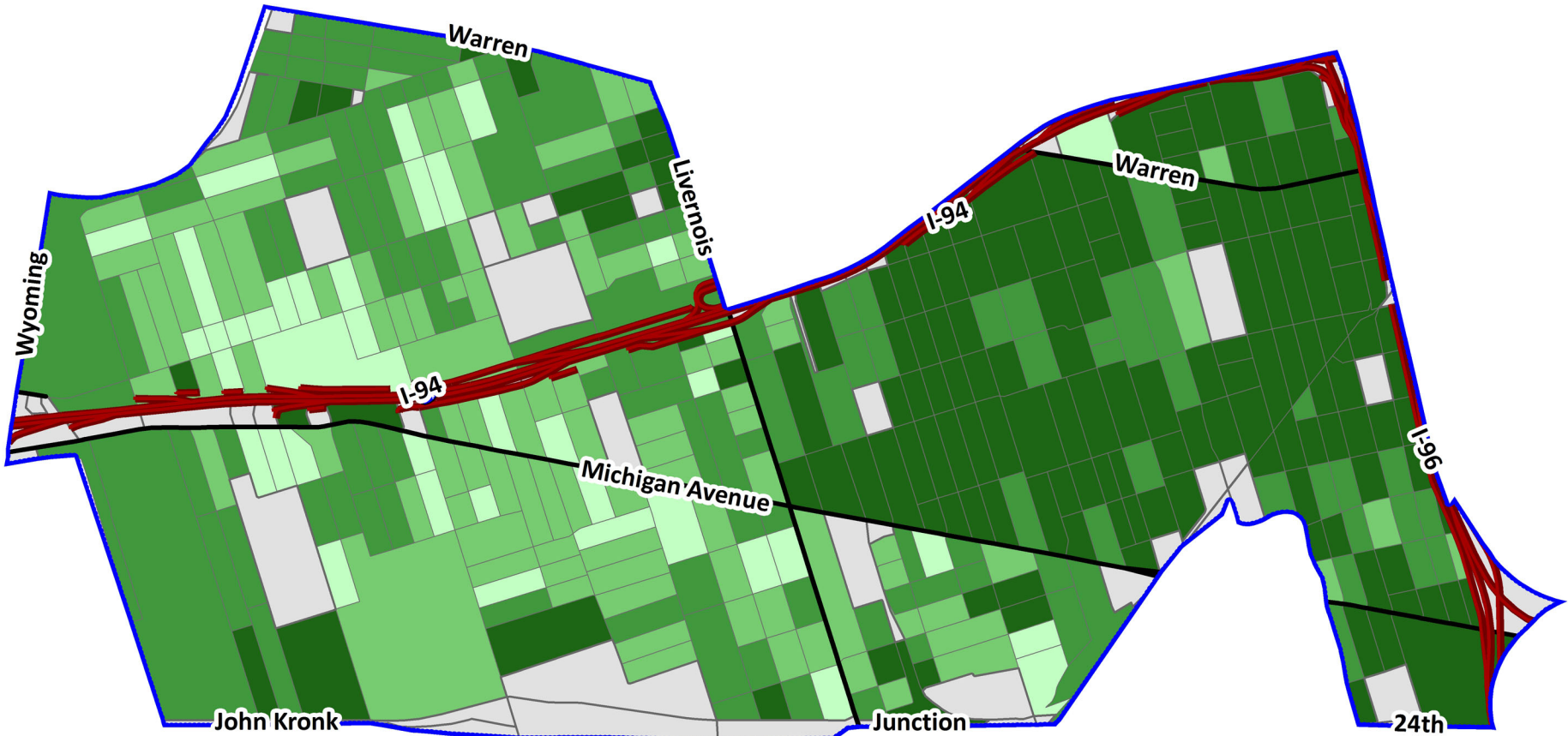
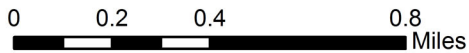


Vacant Lots as Percentage of Residential Parcels, by Census Block Chadsey/Condon Neighborhood, Detroit, Michigan



The Detroit Residential Parcel Survey (DRPS) surveyed predominantly residential parcels. The DRPS also includes vacant lots in neighborhood commercial areas adjacent to residential areas. This map does not include vacant lots in other commercial or industrial areas.



Sources: Detroit Residential Parcel Survey;
Data Driven Detroit. 3/5/2010

