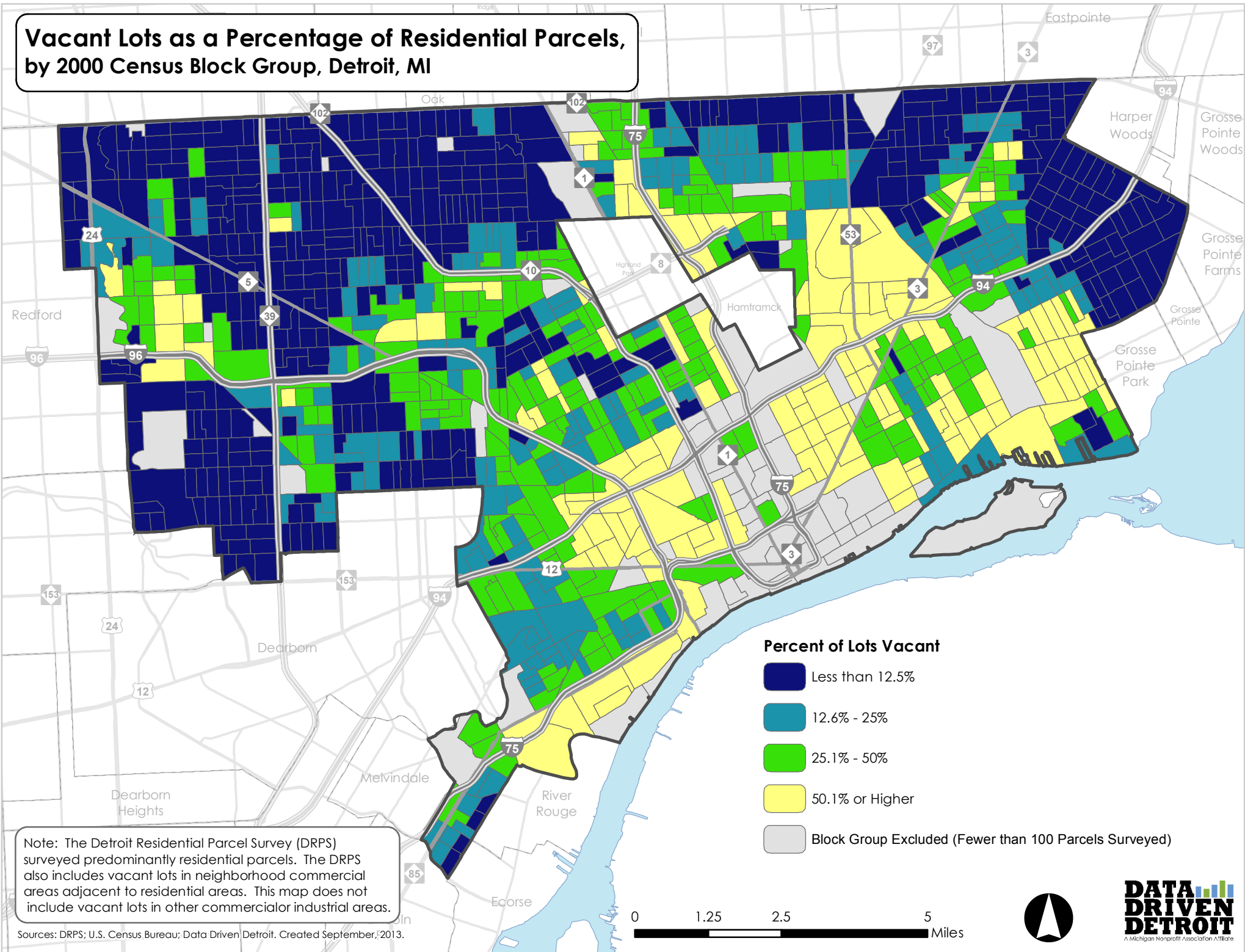


Vacant Lots as a Percentage of Residential Parcels, by 2000 Census Block Group, Detroit, MI



Note: The Detroit Residential Parcel Survey (DRPS) surveyed predominantly residential parcels. The DRPS also includes vacant lots in neighborhood commercial areas adjacent to residential areas. This map does not include vacant lots in other commercial or industrial areas.

Sources: DRPS; U.S. Census Bureau; Data Driven Detroit. Created September, 2013.

Percent of Lots Vacant

- Less than 12.5%
- 12.6% - 25%
- 25.1% - 50%
- 50.1% or Higher
- Block Group Excluded (Fewer than 100 Parcels Surveyed)

