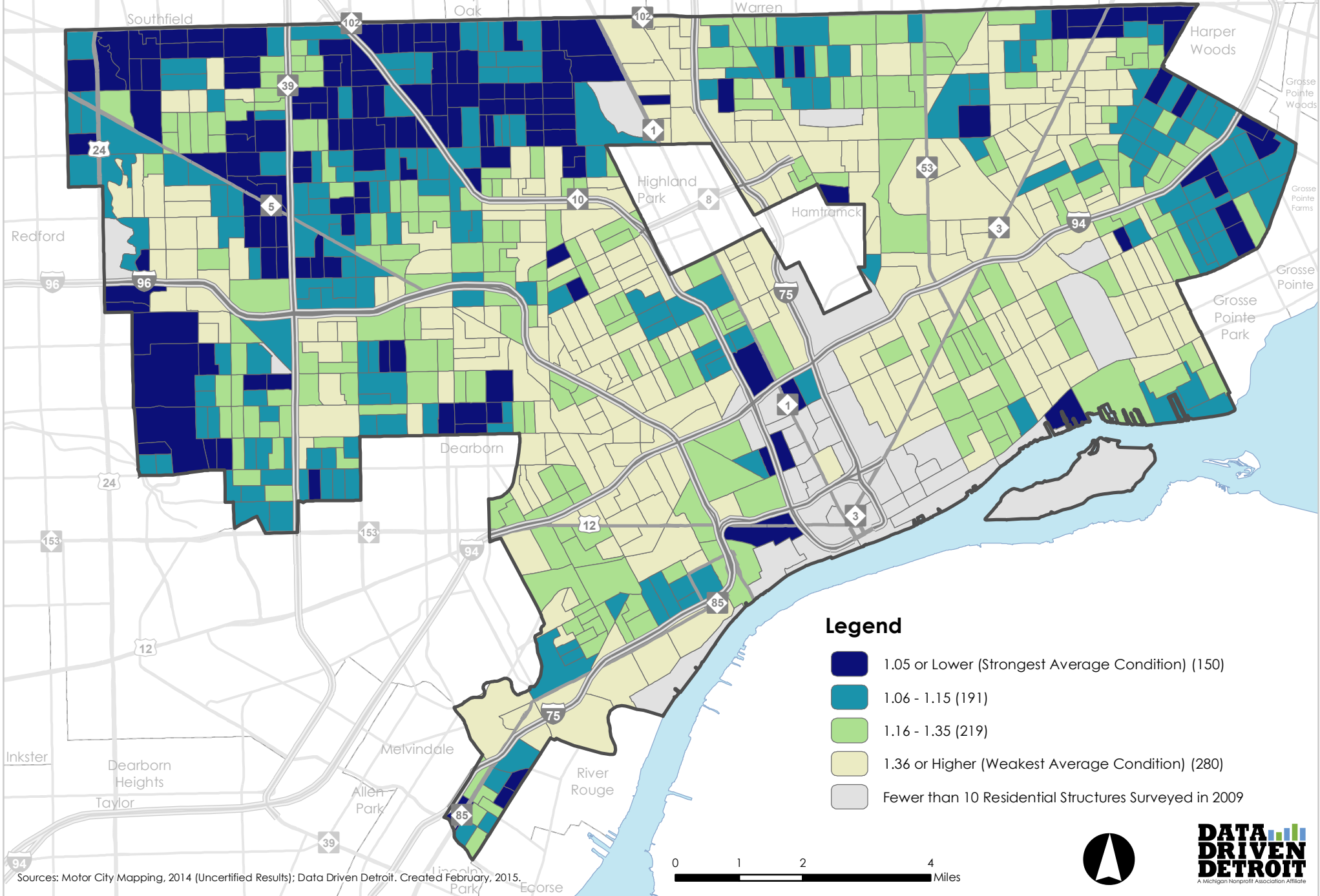


Average Residential Structure Condition, 2014 (2009 Ranges)



Legend

- 1.05 or Lower (Strongest Average Condition) (150)
- 1.06 - 1.15 (191)
- 1.16 - 1.35 (219)
- 1.36 or Higher (Weakest Average Condition) (280)
- Fewer than 10 Residential Structures Surveyed in 2009

