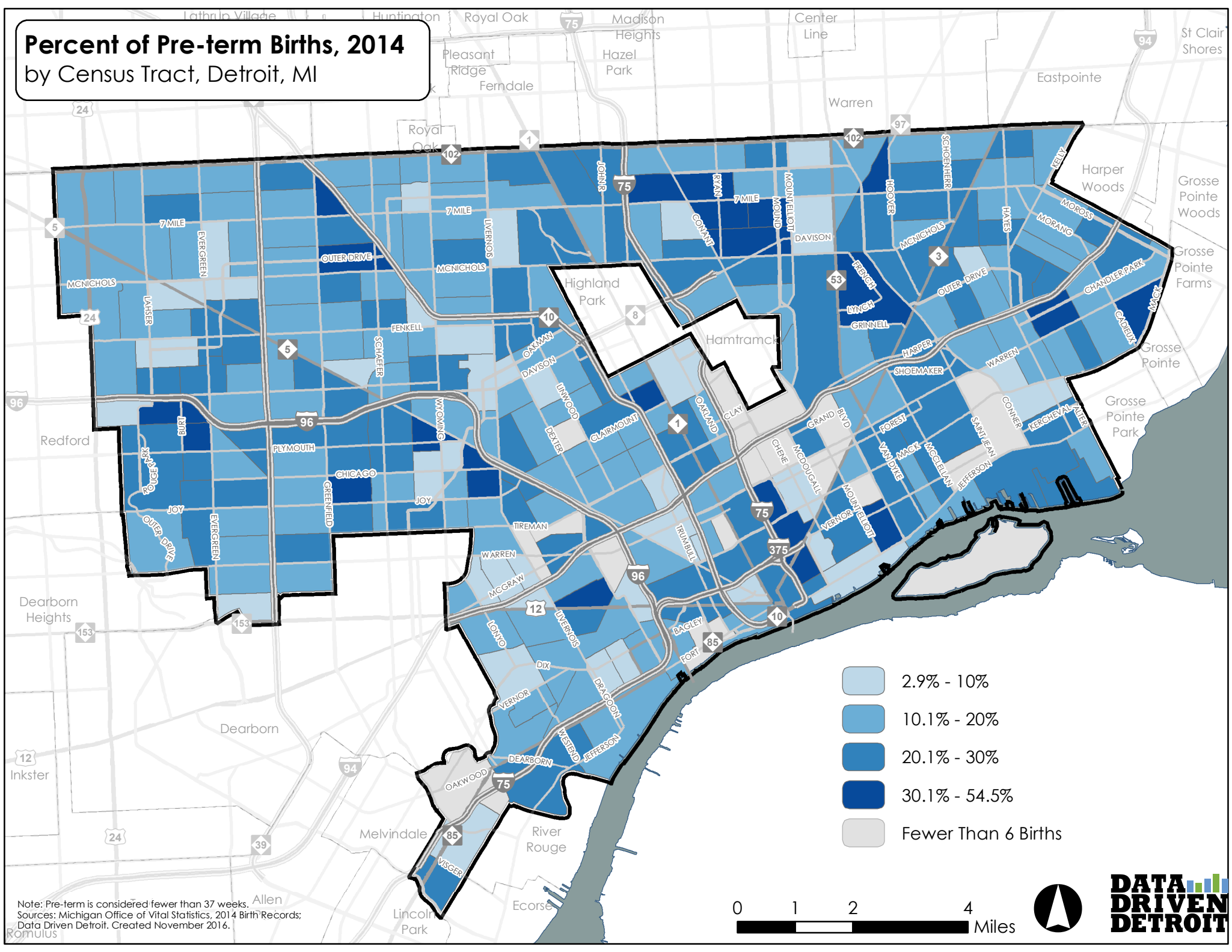


Percent of Pre-term Births, 2014 by Census Tract, Detroit, MI



- 2.9% - 10%
- 10.1% - 20%
- 20.1% - 30%
- 30.1% - 54.5%
- Fewer Than 6 Births

Note: Pre-term is considered fewer than 37 weeks.
Sources: Michigan Office of Vital Statistics, 2014 Birth Records;
Data Driven Detroit. Created November 2016.

