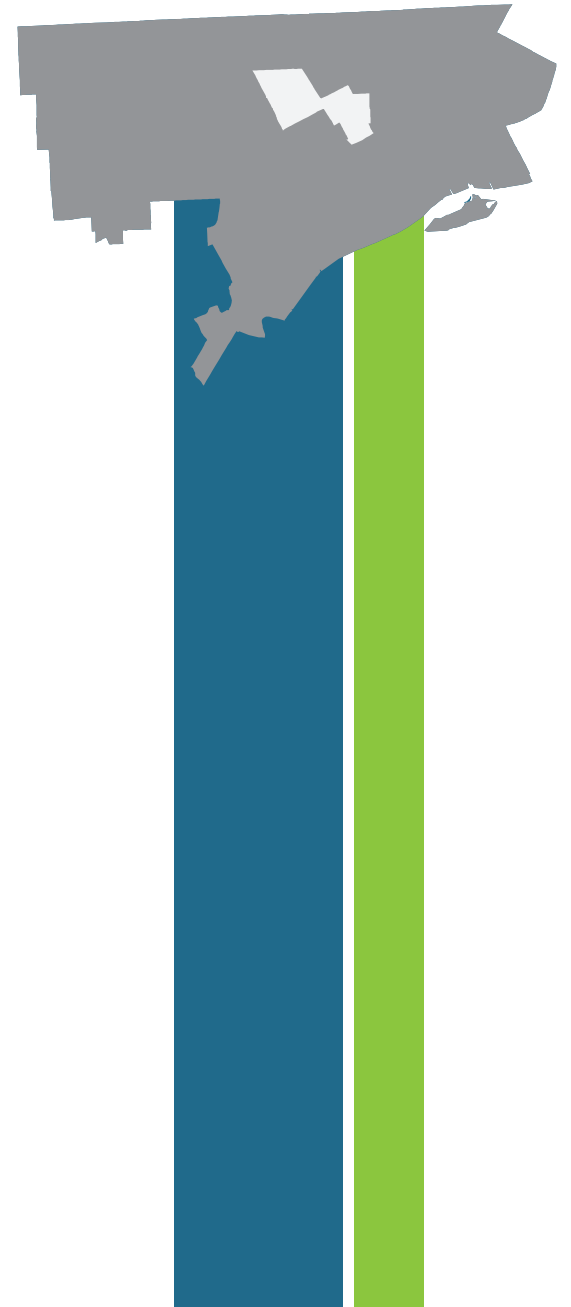


State of the Detroit Child

2012 Report



State of the Detroit Child

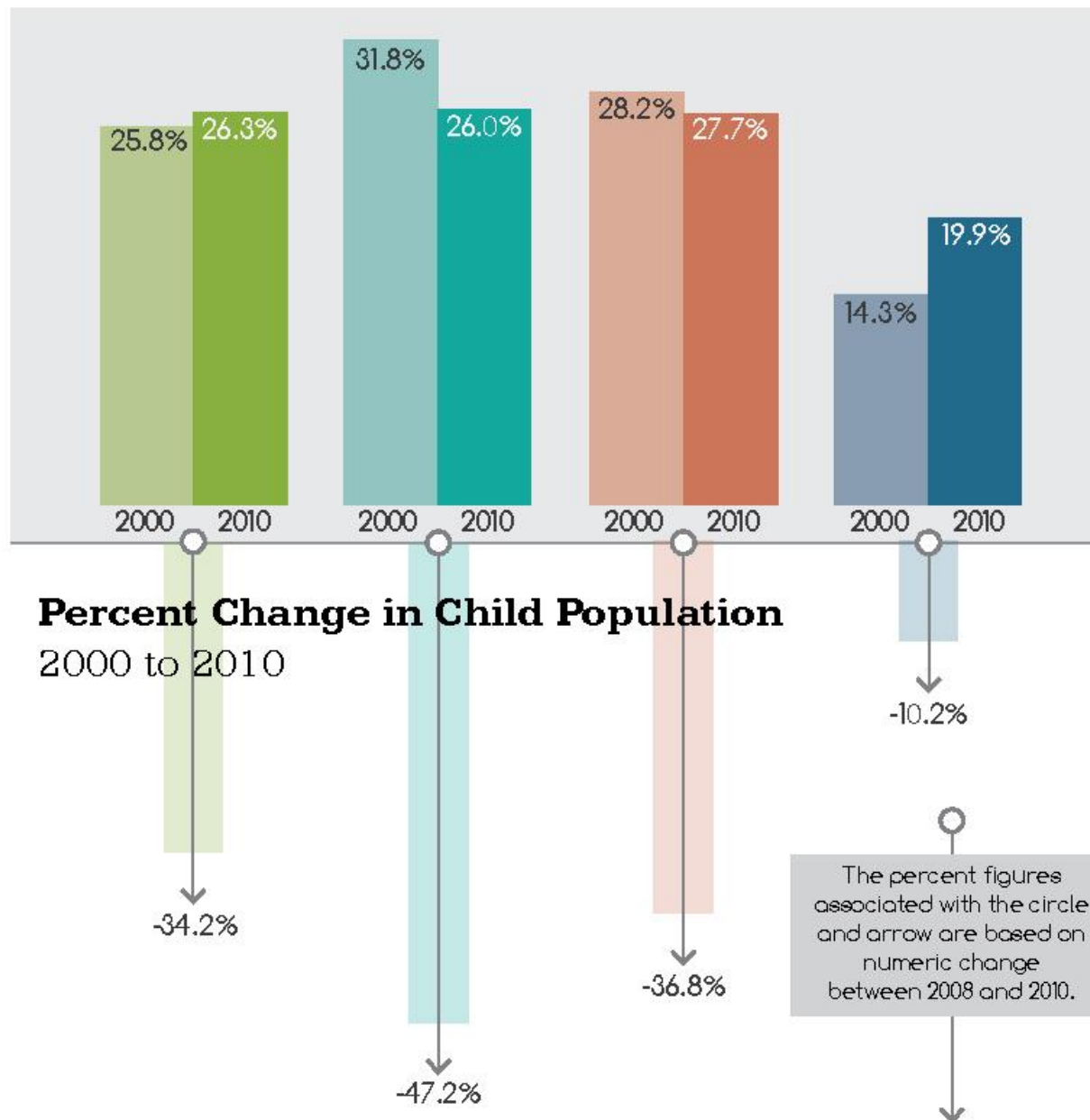
2012 Report



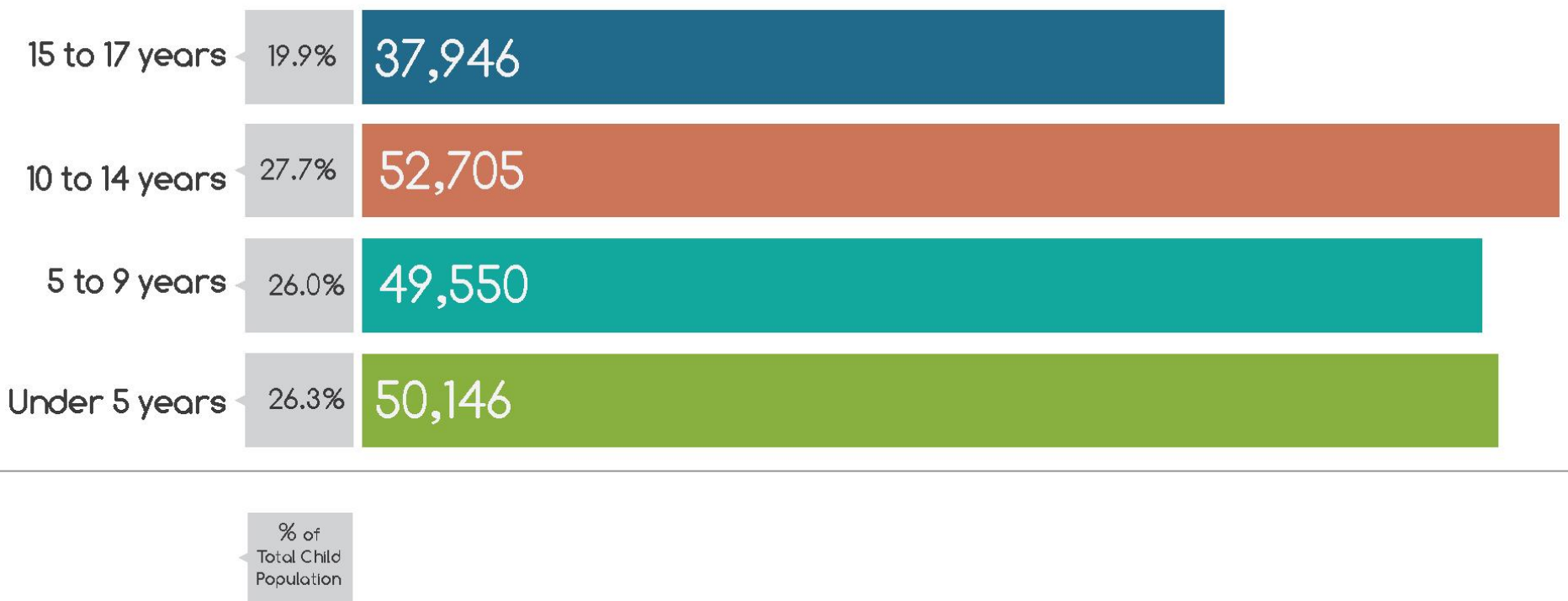
Contents

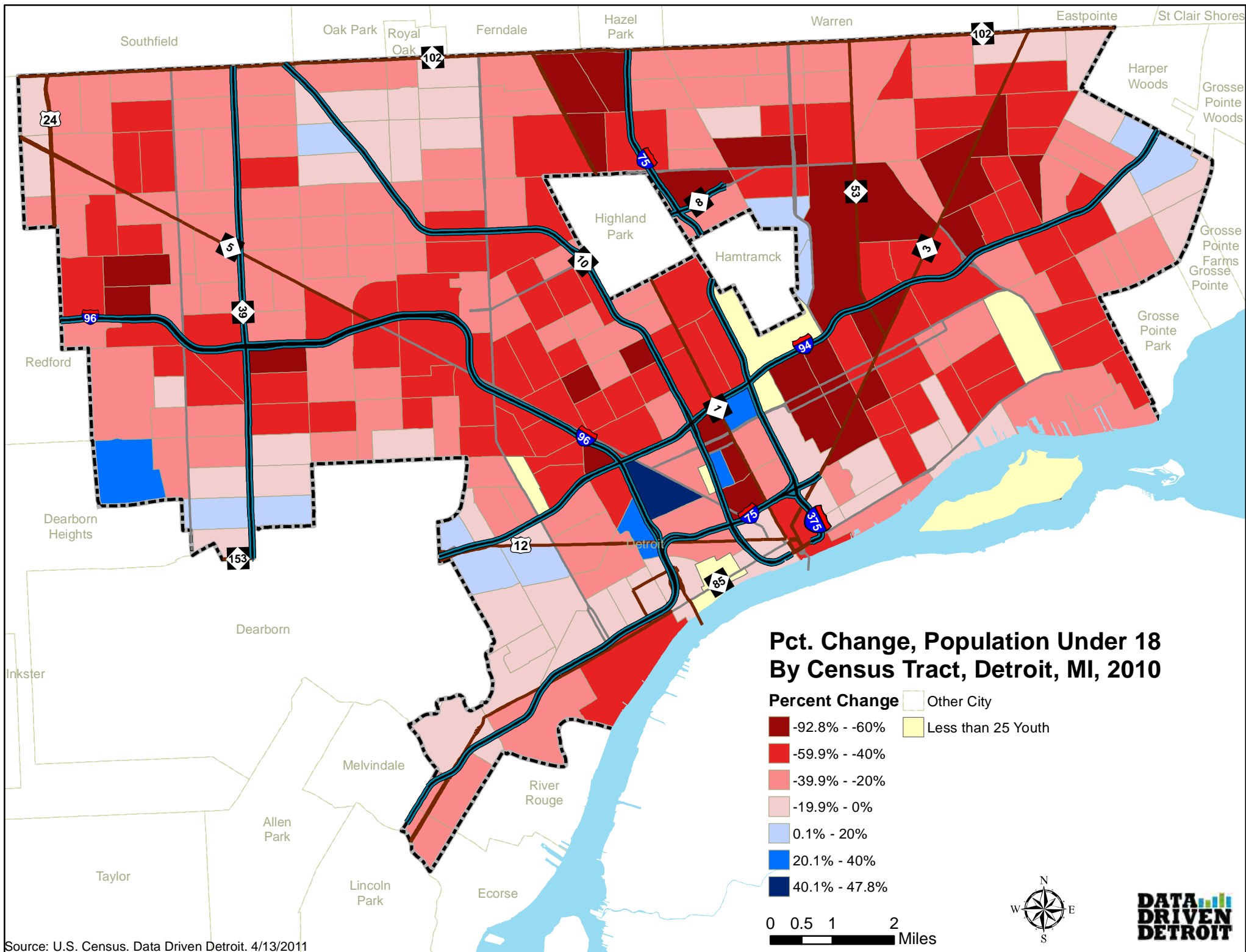
Introduction	1
Demographic Overview	2
Family Economic Security	7
Early Childhood Development	11
K - 12 Education	15
Health & Safety	23
Considerations	30

Children by Age Group as Percent of Child Population



Child Population by Age in 2010

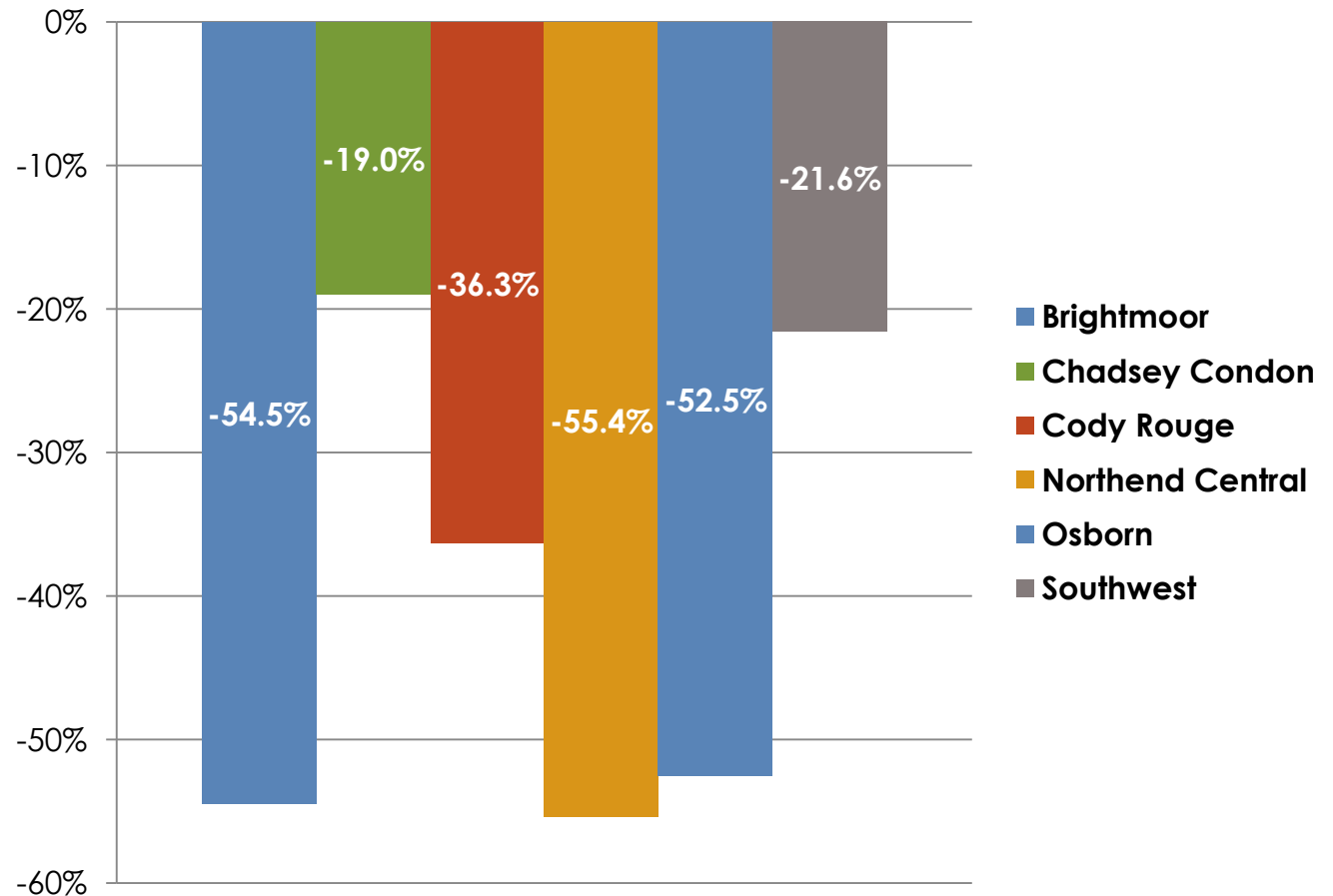




When Children Reached School Age, Many Parents Decided to Leave Detroit for the Suburbs

The Population 5 to 9 years of age decreased in all neighborhoods.

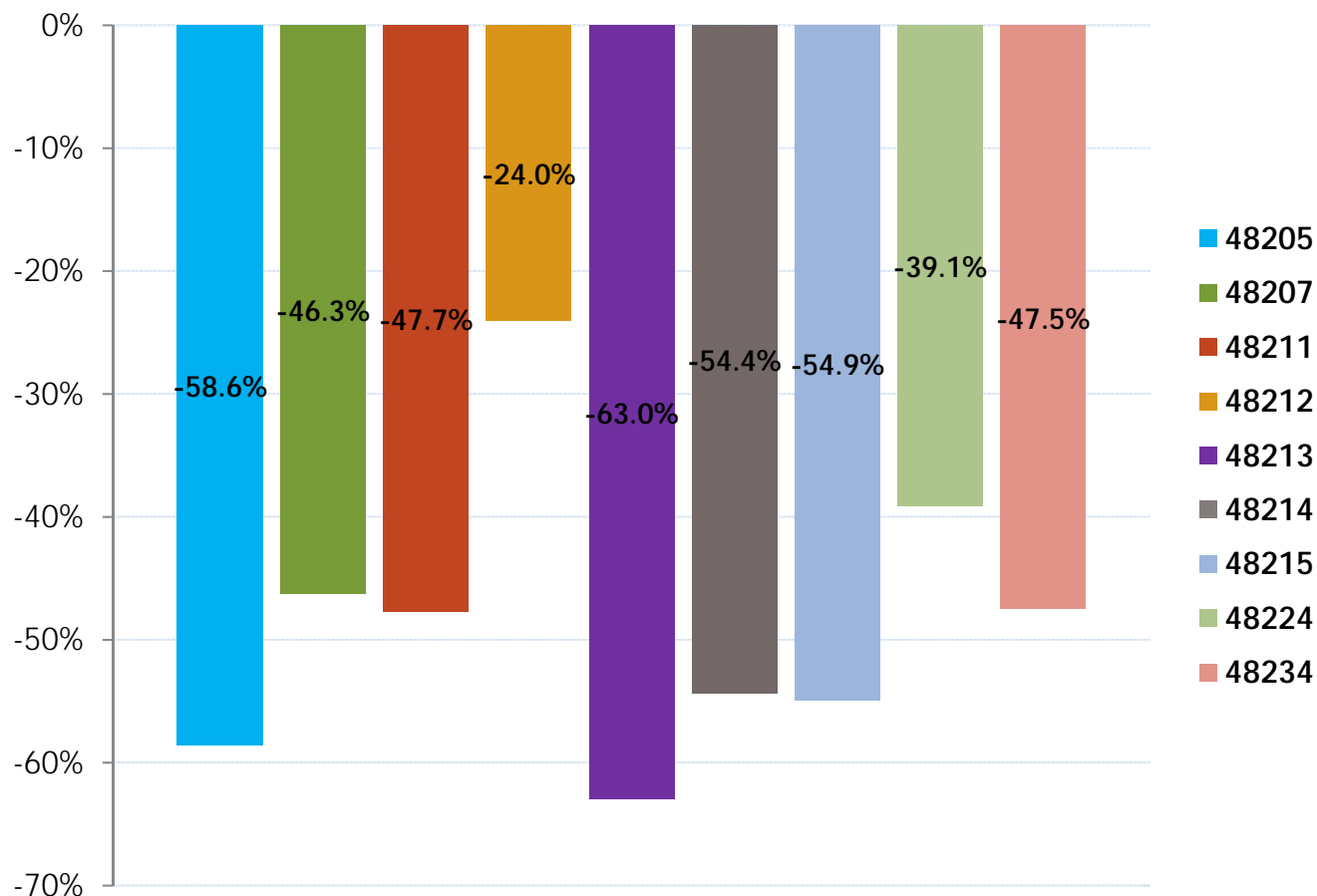
The Latino community experienced the smallest losses – well below the city average. African American parents moved to the suburbs in unprecedented numbers.



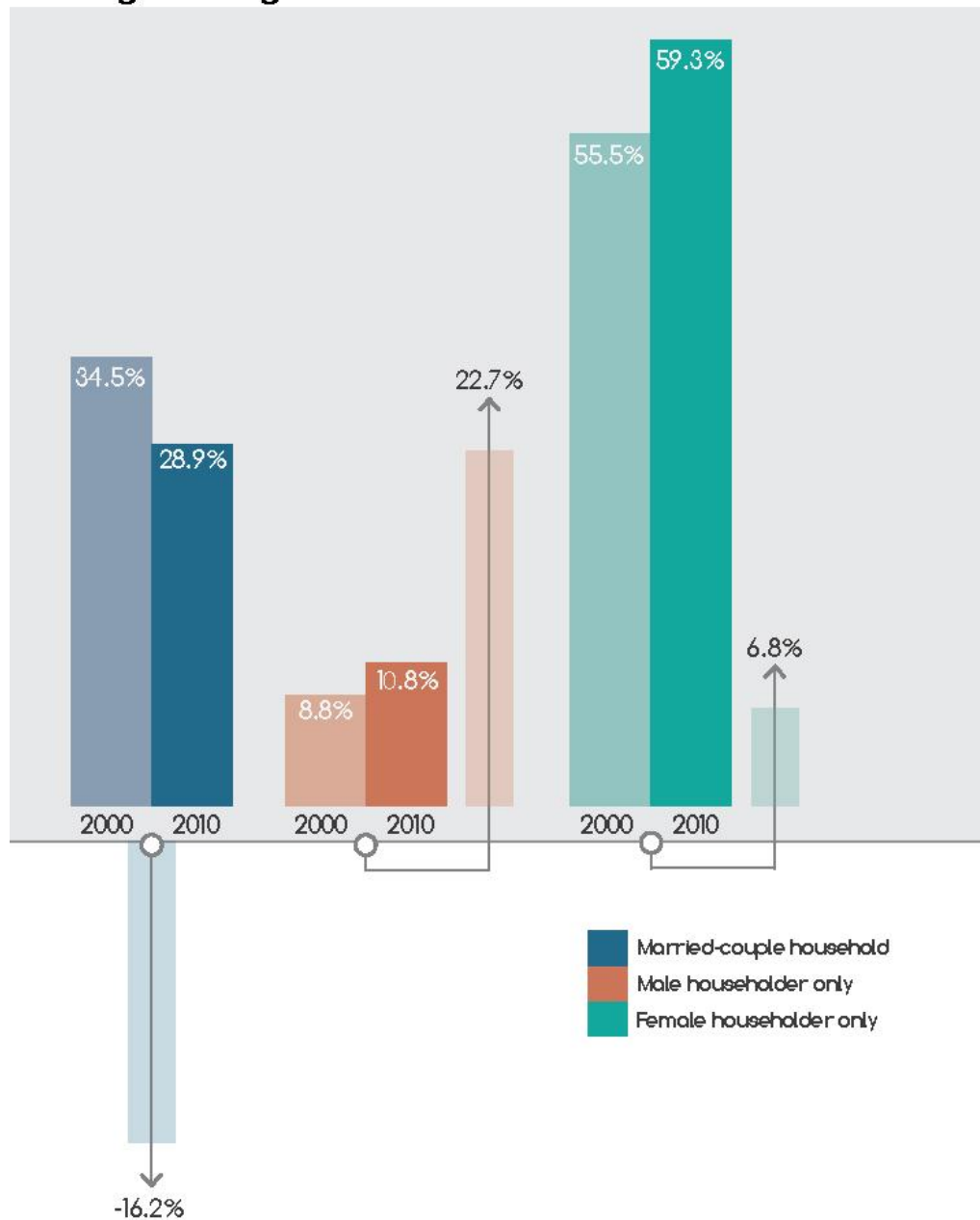
When Children Reached School Age, Many Parents Decided to Leave Detroit for the Suburbs

The Population 5 to 9 years of age decreased in all ZIP Codes.

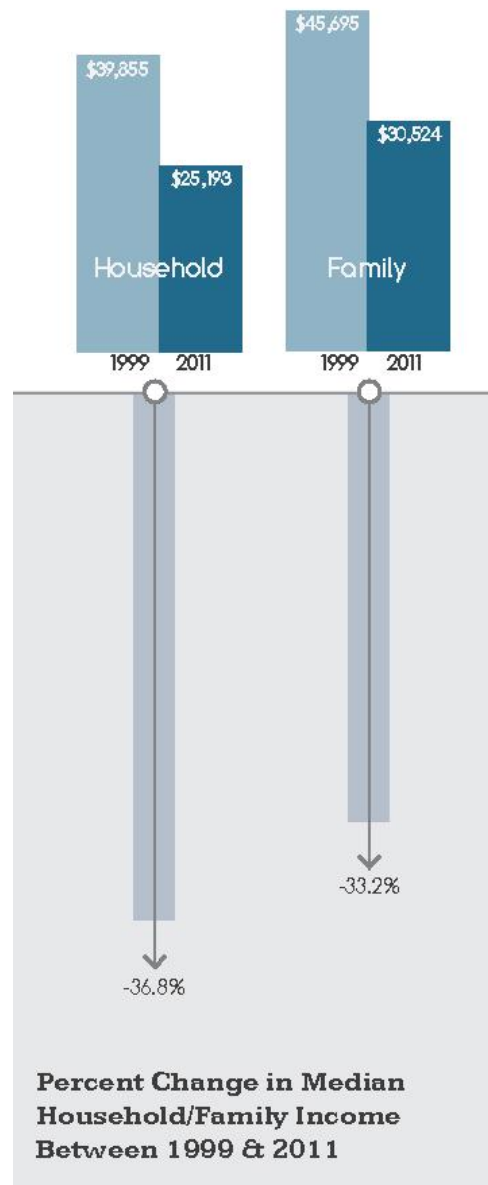
Losses accelerated when children reached school age, with African American families leaving for close in suburbs. Hamtramck fared much better than the rest.



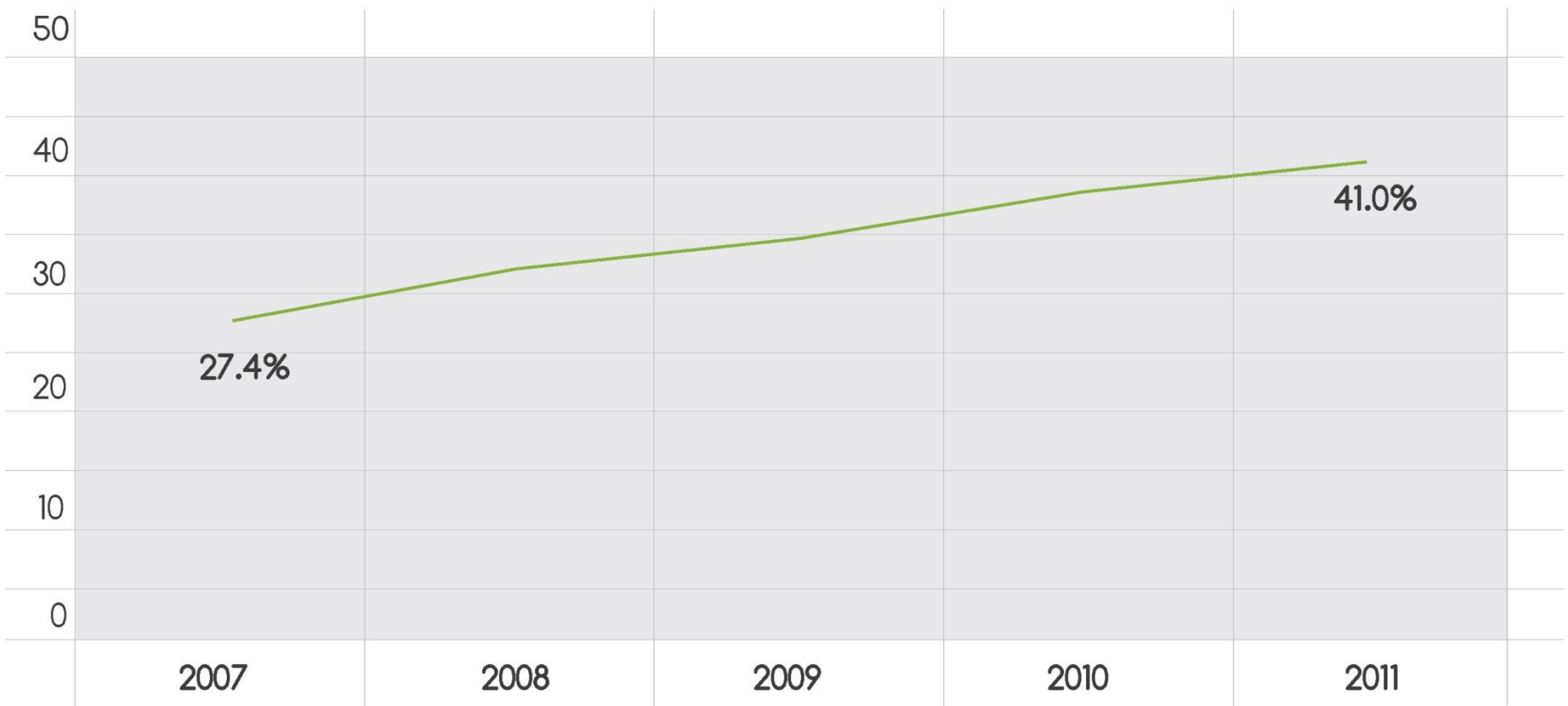
Living Arrangements for Children



Change in Median Household & Family Income



Food Assistance Program Participation



Children Living below the Poverty Line in 2011



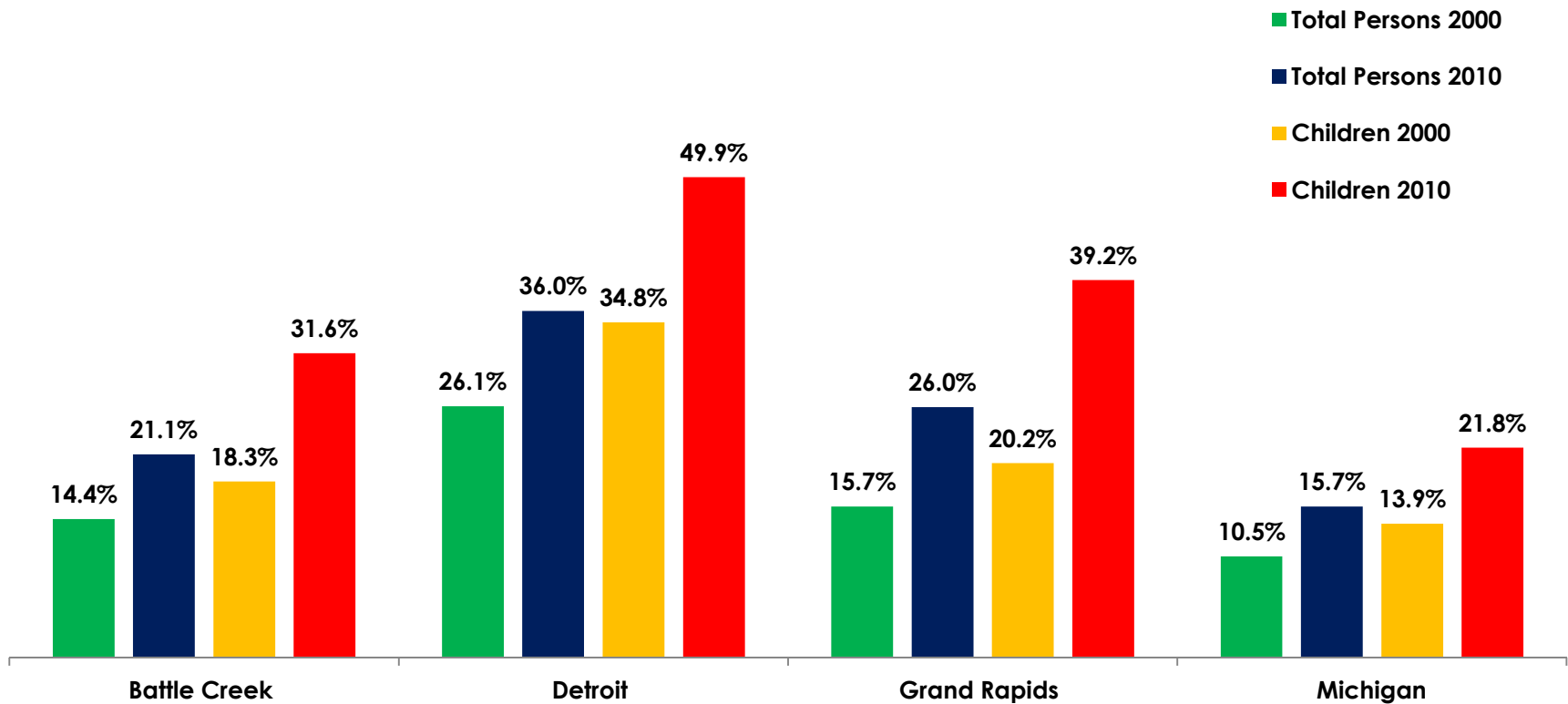
Percent of children in poverty:

34.8% in 1999. **57.3%** in 2011.

Percent Change
+64.7%
1999 to 2011

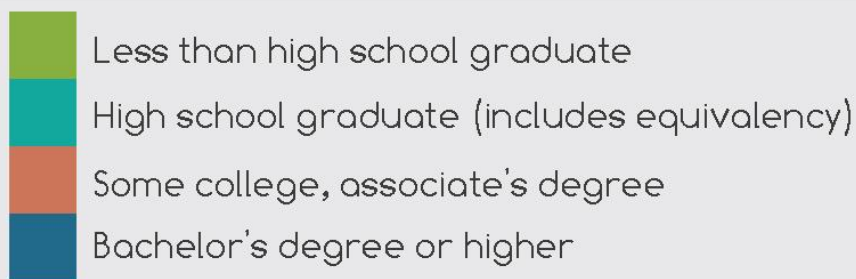
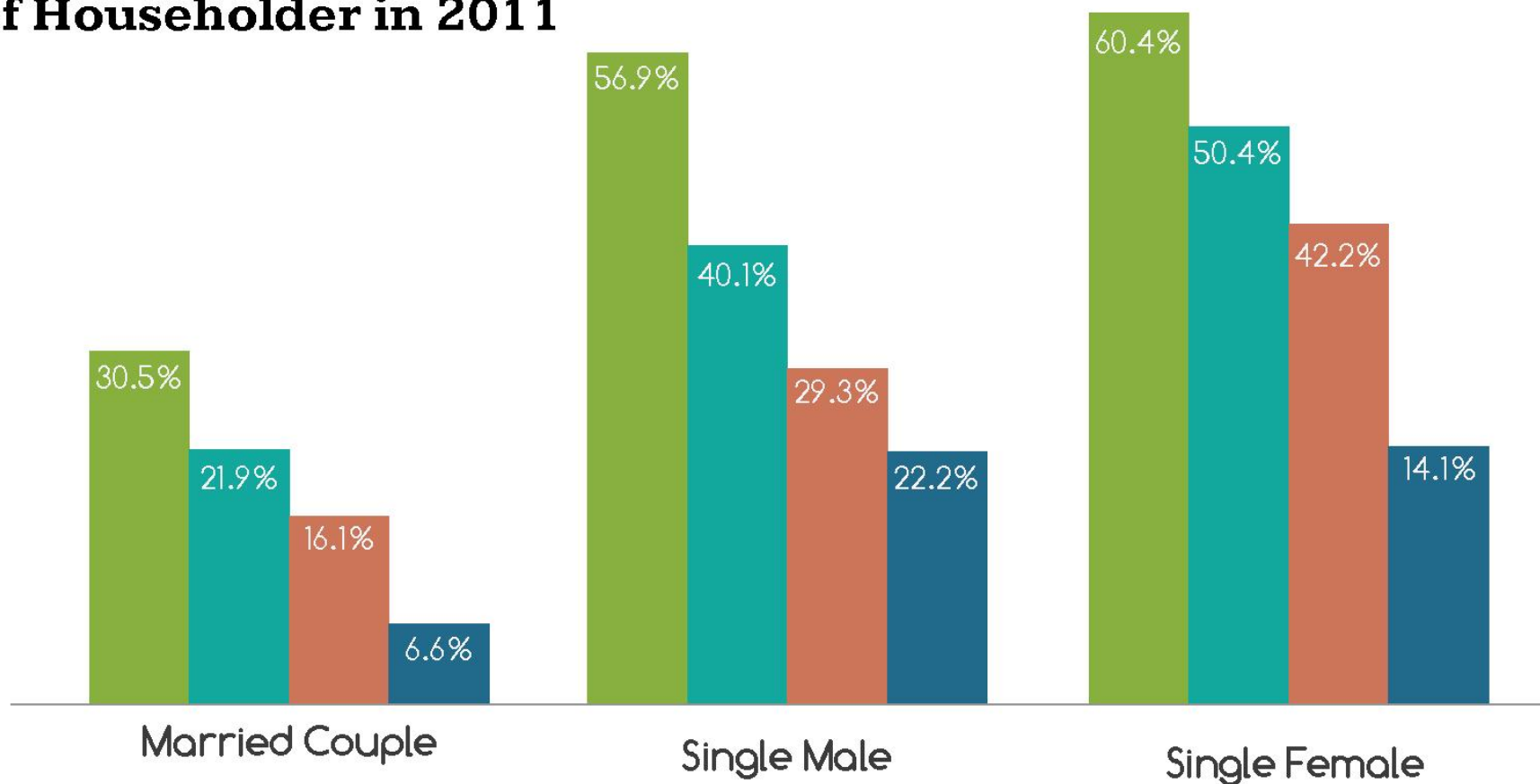
Poverty Rates Have Increased in Our Core Cities and Moved to Our Suburbs as Well

Poverty Rates for Total Population and Children, 1999 - 2010



Source: 2000 Census and 2008-10 ACS

Family Poverty Rate by Educational Attainment of Householder in 2011



35.5%

Percent of Detroit's families
whose income in the past 12 months
was below the poverty level.

Births by Marital Status

Births by the Mother's Education

Births by Age of the Mother

The percent figures associated with the circle and arrow are based on numeric change between 2008 and 2010.

Not Married

Married

Did not Graduate High School

High School Graduate

Educated Past High School

Teens

Twenties

Thirties

Forties

5.9%

2008 2009 2010

2008 2009 2010

2008 2009 2010

2008 2009 2010

2008 2009 2010

2008 2009 2010

2008 2009 2010

2008 2009 2010

2008 2009 2010

2008 2009 2010

-4.6%

-11.9%

-9.2%

-1.1%

-9.1%

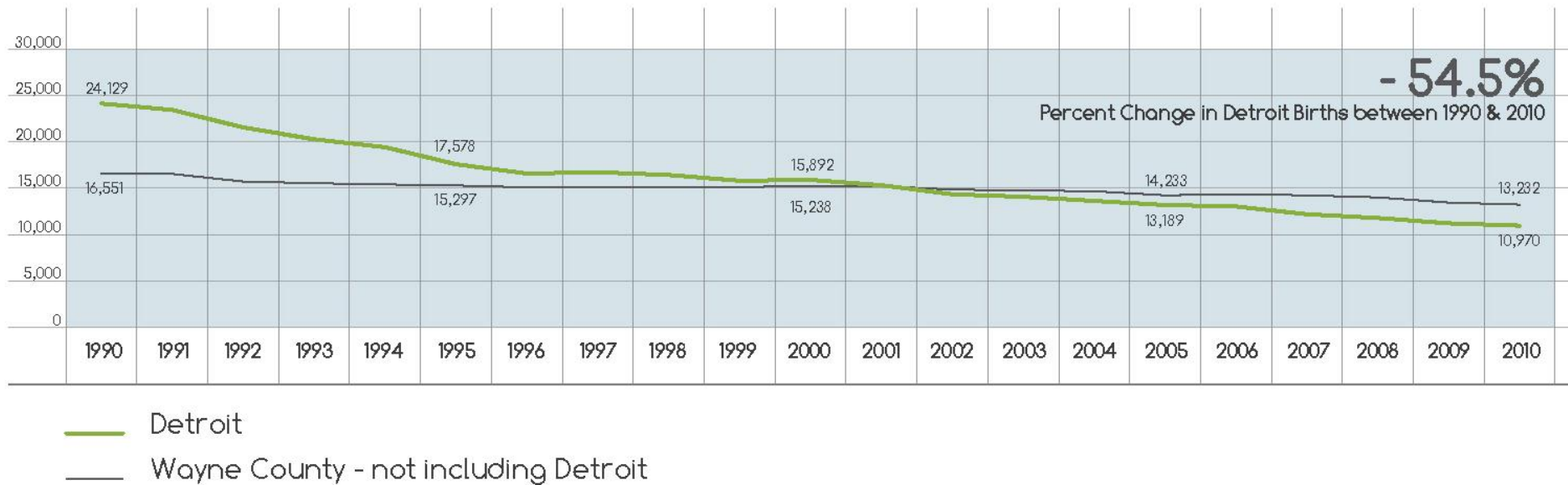
-9.2%

-2.5%

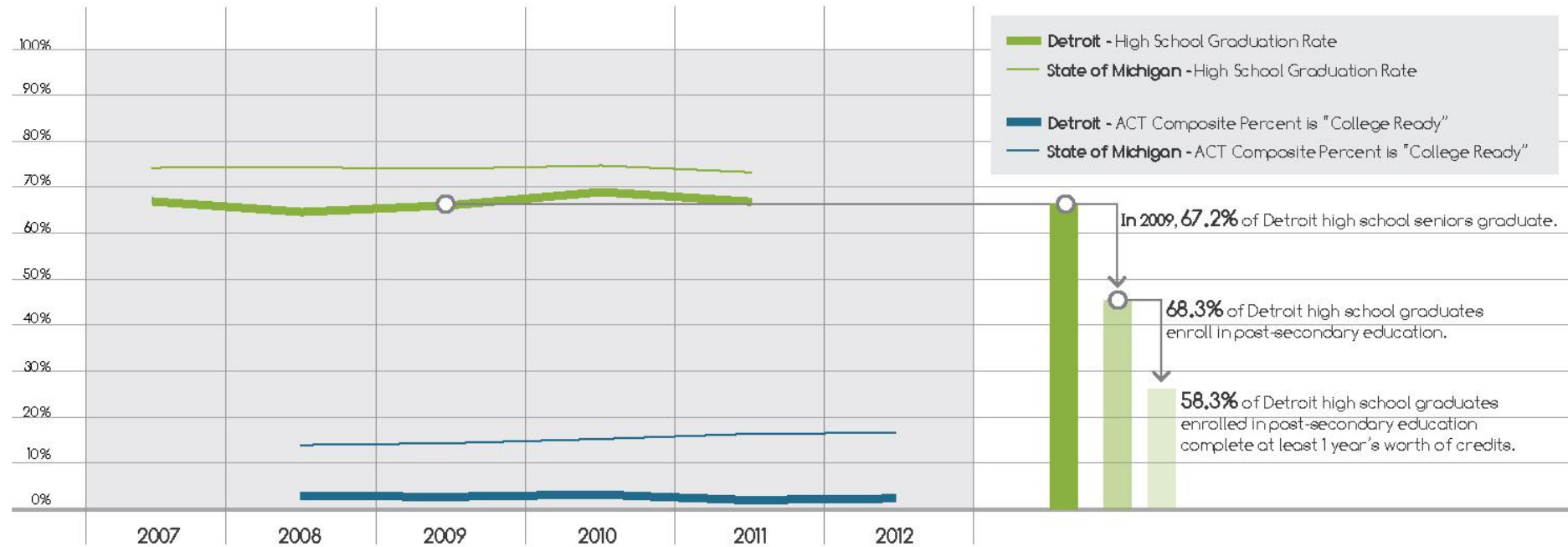
-13.0%

2.0%

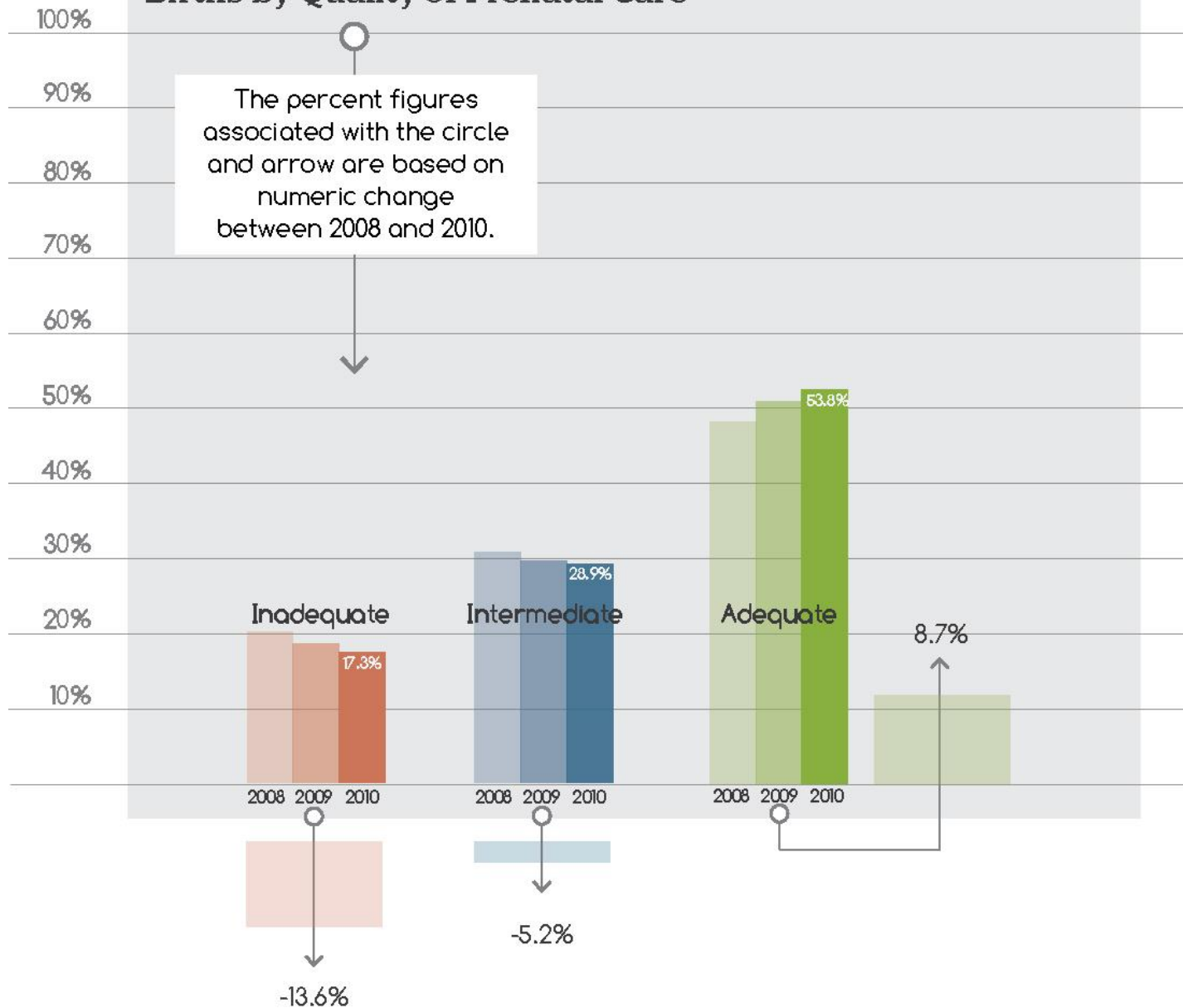
Change in Number of Births



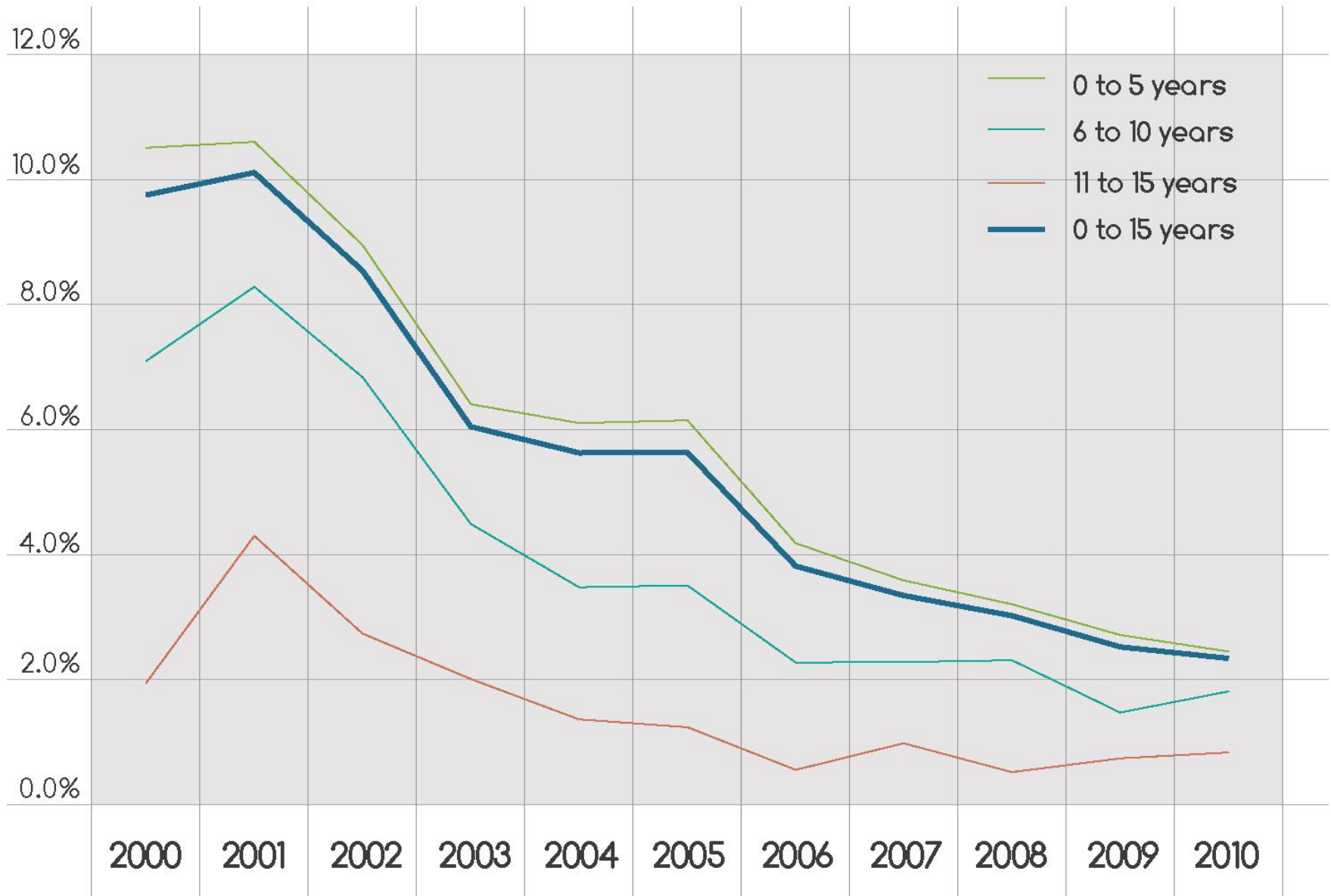
High School Graduation Rates Compared to ACT Scores & College Enrollment



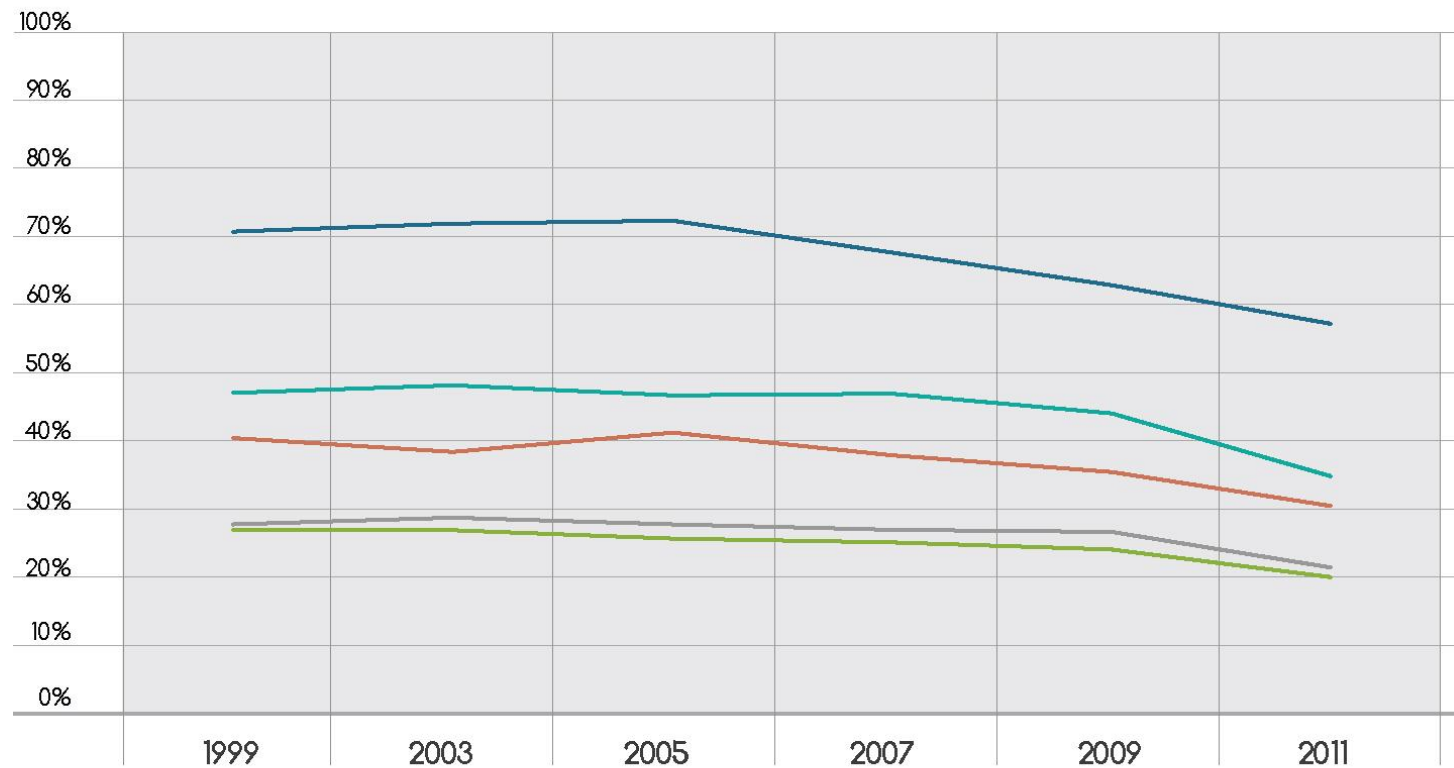
Births by Quality of Prenatal Care



Children with Elevated Blood Lead Levels



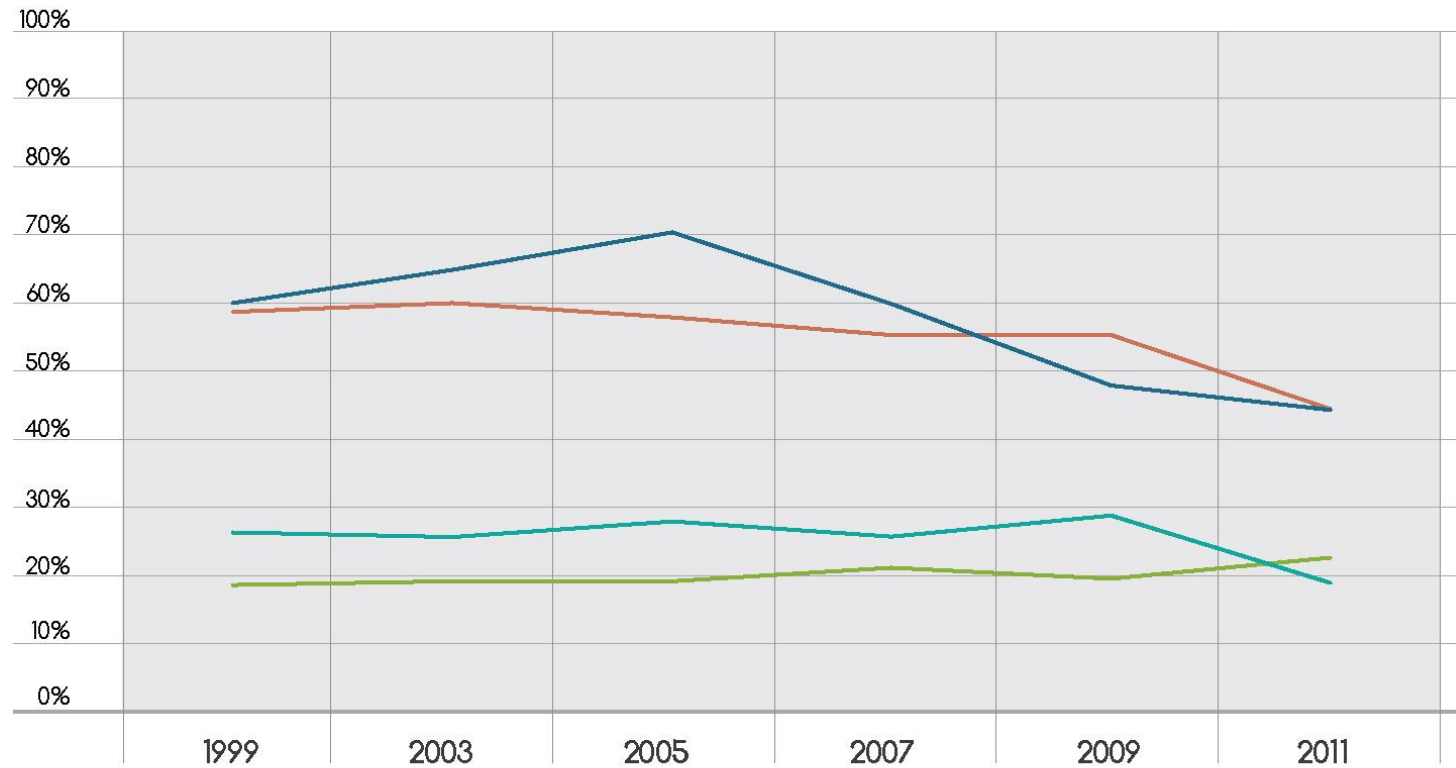
Eating Habits Indicators from a Survey of DPS Students



Percentage of DPS Students who DID NOT eat:

- fruit in the last 7 days.
- green salad in the last 7 days.
- potatoes in the last 7 days.
- carrots in the last 7 days.
- other vegetables in the last 7 days.

Physical Activity Indicators from a Survey of DPS Students



Percentage of DPS Students:

- who are overweight.
- who described themselves as slightly or very overweight.
- who did not attend physical education classes in an average week.
- who watched television 3 or more hours per day.



www.DataDrivenDetroit.org

TechTown

440 Burroughs; Suite 330

Detroit, Michigan 48202

313-309-4124