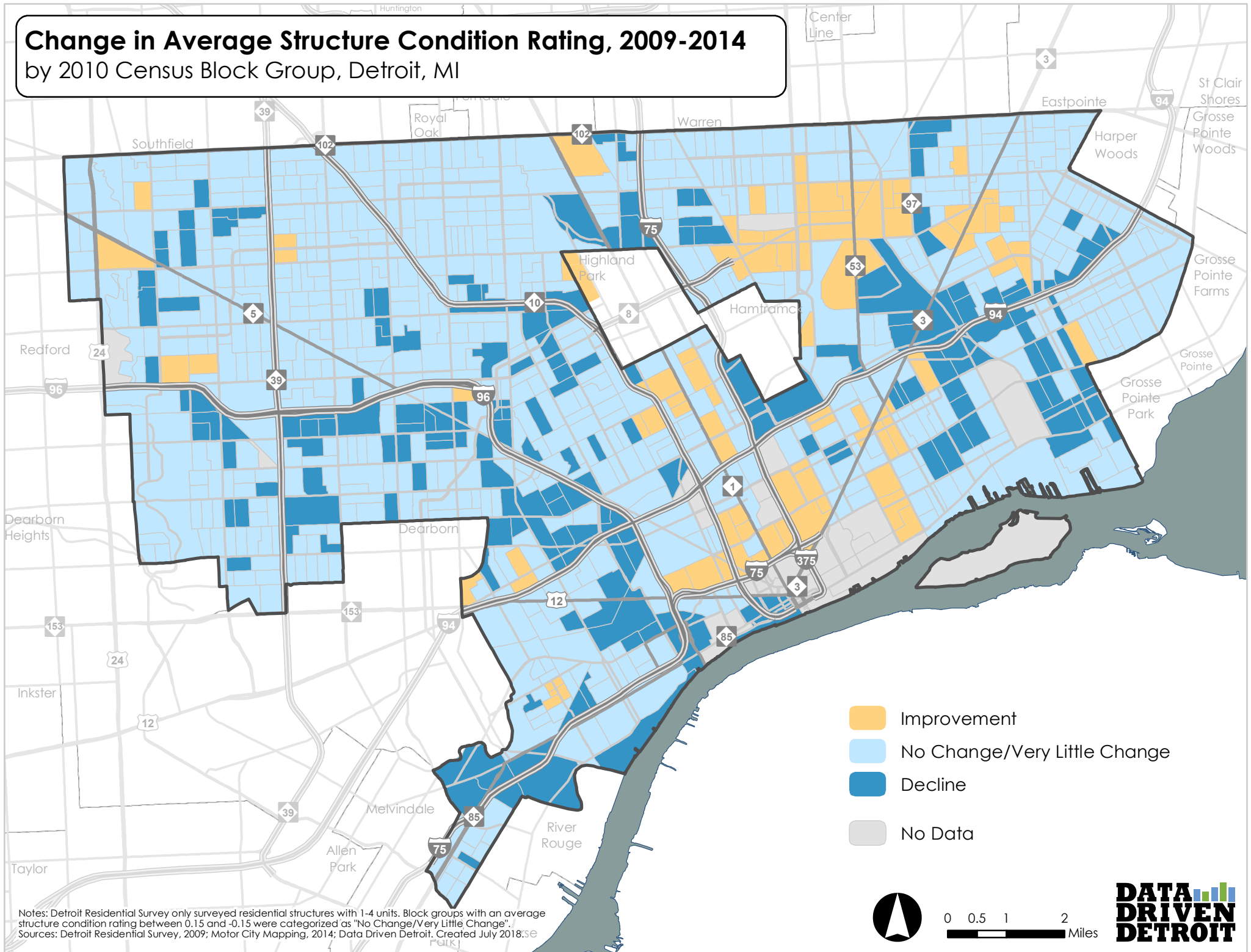


Change in Average Structure Condition Rating, 2009-2014

by 2010 Census Block Group, Detroit, MI



Notes: Detroit Residential Survey only surveyed residential structures with 1-4 units. Block groups with an average structure condition rating between 0.15 and -0.15 were categorized as "No Change/Very Little Change".
 Sources: Detroit Residential Survey, 2009; Motor City Mapping, 2014; Data Driven Detroit. Created July 2018.

- Improvement
- No Change/Very Little Change
- Decline
- No Data

0 0.5 1 2 Miles

